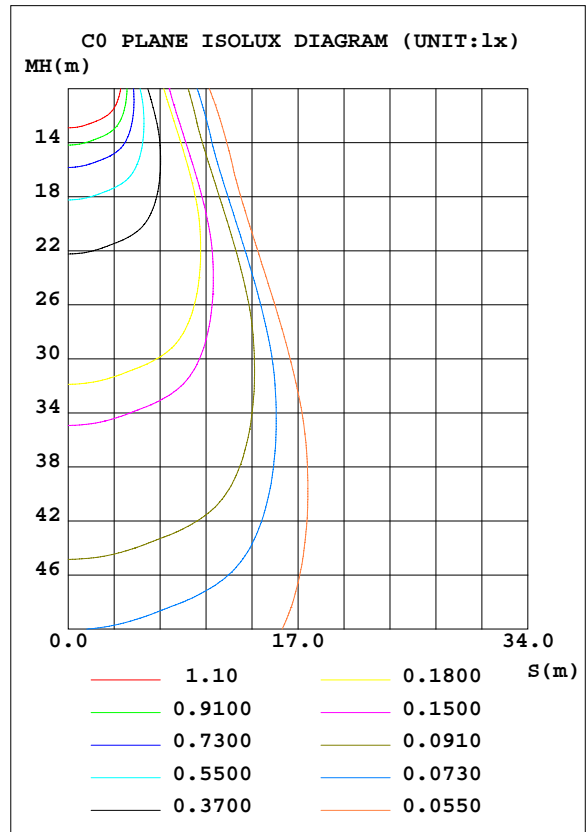
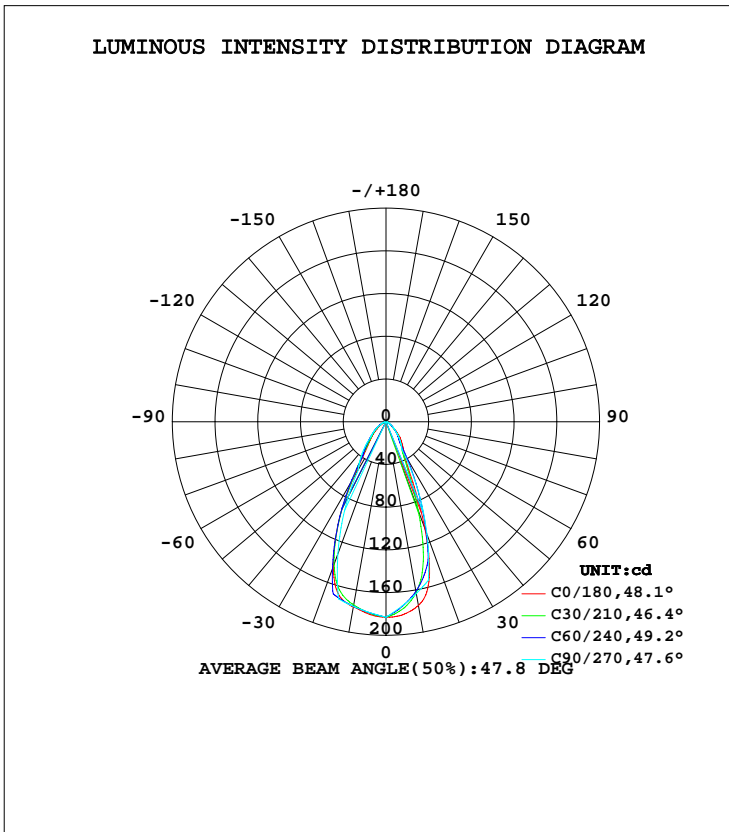


LUMINAIRE PHOTOMETRIC TEST REPORT

NAME: Sagitta-4W-3000k	TYPE:	WEIGHT:
DIM.:	SPEC.:	SERIAL No.:
MFR.: DOBAC	SUR.:	PROTECTION ANGLE:

DATA OF LAMP		PHOTOMETRIC DATA				Eff: 42.06 lm/W
MODEL	Sagitta-4W-3000k	I _{max} (cd)	183.0	S/MH(C0/180)	0.79	
NOMINAL POWER(W)	4	LOR(%)	23.0	S/MH(C90/270)	0.76	
RATED VOLTAGE(V)	228	TOTAL FLUX(lm)	140.05	η UP, DN(C0-180)	0.0, 12.6	
NOMINAL FLUX(lm)	609.237	CIE CLASS	DIRECT	η UP, DN(C180-360)	0.0, 10.4	
LAMPS INSIDE	1	η up(%)	0.0	CIBSE SHR NOM	0.75	
TEST VOLTAGE(V)	227.6	η down(%)	23.0	CIBSE SHR MAX	0.75	



C Range: 0 - 360DEG
C Interval: 5.0DEG
Test Speed: HIGH
Temperature:25.3DEG
Operators:DOBAC
Test Date:2017-11-07

γ Range: 0 - 90DEG
γ Interval: 0.5DEG
Test System:EVERFINE GO-2000B_V1 SYSTEM V1.0.260
Humidity:65.0%
Test Distance:6.960m [K=1.0000]
Remarks:

ZONAL FLUX DIAGRAM

ZONAL FLUX DIAGRAM:

γ	C0	C45	C90	C135	C180	C225	C270	C315	γ	Φ zone	Φ total	lum, lamp
5	180.8	179.6	179.3	179.4	181.4	174.5	173.2	175.1	0- 5	4.295	4.295	3.07,0.71
10	176.1	174.8	175.6	172.1	174.7	160.8	163.4	164.3	5- 10	12.41	16.70	11.9,2.74
15	168.8	167.6	171.8	157.1	155.2	137.5	153.6	148.7	10- 15	19.35	36.06	25.7,5.92
20	144.3	153.3	131.9	128.8	106.5	98.30	112.3	125.5	15- 20	23.08	59.14	42.2,9.71
25	106.4	112.4	91.93	83.03	52.65	55.29	71.07	89.53	20- 25	21.14	80.28	57.3,13.2
30	61.67	71.71	51.98	48.21	34.00	32.72	29.80	58.00	25- 30	15.94	96.22	68.7,15.8
35	33.87	41.37	41.35	30.60	27.00	22.67	24.19	33.74	30- 35	11.02	107.2	76.6,17.6
40	23.87	25.33	30.72	23.36	21.34	17.32	18.57	20.43	35- 40	8.741	116.0	82.8,19
45	17.82	19.83	20.08	17.94	15.46	13.08	12.96	15.59	40- 45	7.255	123.2	88,20.2
50	12.28	15.12	15.60	12.83	9.564	8.925	9.851	11.02	45- 50	5.727	129.0	92.1,21.2
55	8.455	11.16	11.11	8.190	5.854	5.003	6.745	6.931	50- 55	4.301	133.3	95.2,21.9
60	4.687	7.808	6.624	5.648	3.544	3.272	3.639	4.322	55- 60	2.989	136.3	97.3,22.4
65	2.366	4.853	4.824	3.623	1.872	1.828	2.491	2.281	60- 65	1.867	138.1	98.6,22.7
70	1.093	2.673	3.023	2.156	0.9856	0.9361	1.344	1.018	65- 70	1.140	139.3	99.4,22.9
75	0.2533	1.282	1.222	1.134	0.3974	0.4778	0.1956	0.4523	70- 75	0.5794	139.8	99.8,23
80	0.0789	0.1842	0	0.2804	0.1788	0.0872	0	0.0283	75- 80	0.1880	140.0	100,23
85	0	0	0	0	0.1027	0	0	0	80- 85	0.0236	140.1	100,23
90	0	0	0	0	0	0	0	0	85- 90	0.0019	140.1	100,23
95									90- 95			
100									95-100			
105									100-105			
110									105-110			
115									110-115			
120									115-120			
125									120-125			
130									125-130			
135									130-135			
140									135-140			
145									140-145			
150									145-150			
155									150-155			
160									155-160			
165									160-165			
170									165-170			
175									170-175			
180									175-180			
DEG	LUMINOUS INTENSITY:cd								UNIT:lm			

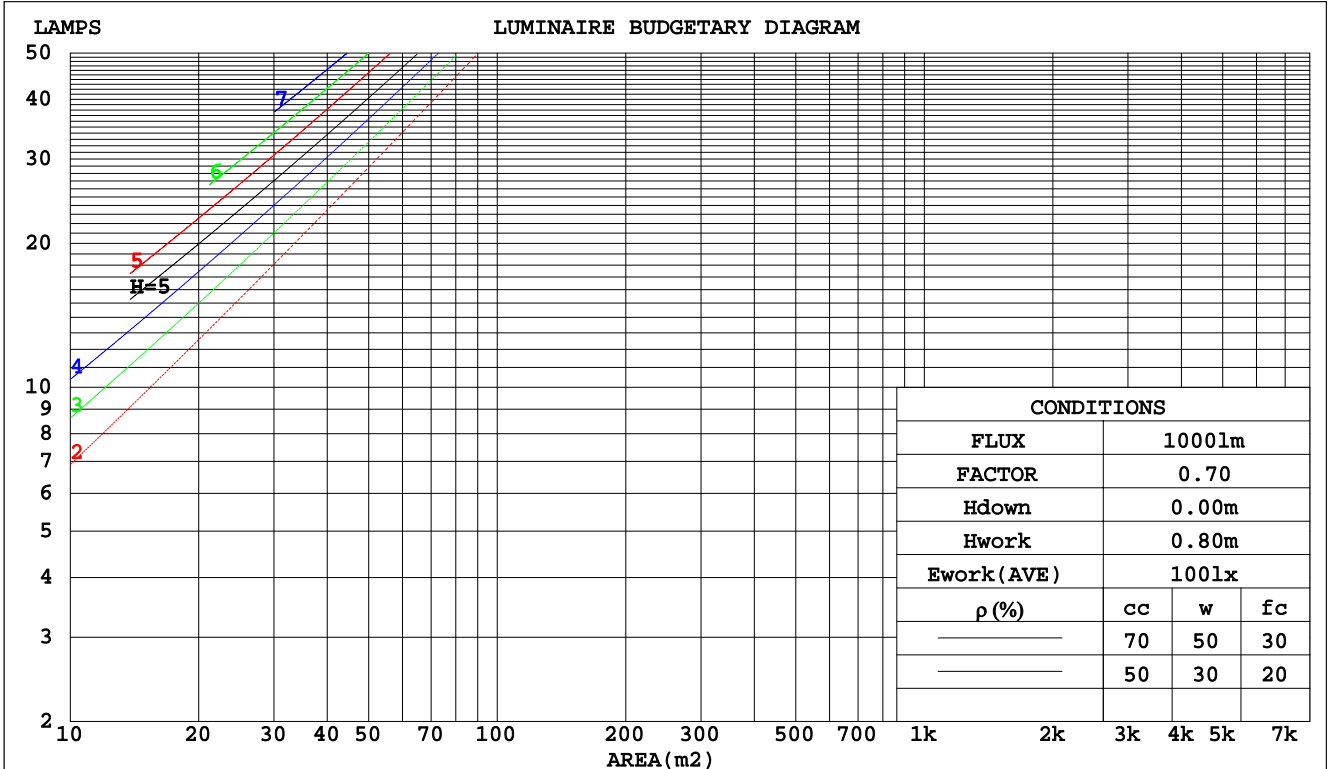
C Range: 0 - 360DEG
C Interval: 5.0DEG
Test Speed: HIGH
Temperature:25.3DEG
Operators:DOBAC
Test Date:2017-11-07

γ Range: 0 - 90DEG
γ Interval: 0.5DEG
Test System:EVERFINE GO-2000B_V1 SYSTEM V1.0.260
Humidity:65.0%
Test Distance:6.960m [K=1.0000]
Remarks:

CU AND LUMINAIRE BUDGETARY ESTIMATE DIAGRAM

NAME: Sagitta-4W-3000k	TYPE:	WEIGHT:
DIM.:	SPEC.:	SERIAL No.:
MFR.: DOBAC	SUR.:	PROTECTION ANGLE:

pcc	80%			70%			50%			30%			10%			0
pw	50%	30%	10%	50%	30%	10%	50%	30%	10%	50%	30%	10%	50%	30%	10%	0
pfc	20%			20%			20%			20%			20%			0
RCR	RCR:Room Cavity Ratio						Coefficients of Utilization(CU)									
0.0	.27	.27	.27	.27	.27	.27	.26	.26	.26	.24	.24	.24	.23	.23	.23	.23
1.0	.25	.25	.24	.25	.24	.24	.24	.23	.23	.23	.23	.22	.22	.22	.22	.21
2.0	.23	.22	.22	.23	.22	.21	.22	.22	.21	.22	.21	.20	.21	.20	.20	.20
3.0	.22	.21	.20	.21	.20	.19	.21	.20	.19	.20	.19	.19	.20	.19	.18	.18
4.0	.20	.19	.18	.20	.19	.18	.19	.18	.18	.19	.18	.17	.19	.18	.17	.17
5.0	.19	.18	.16	.19	.17	.16	.18	.17	.16	.18	.17	.16	.18	.17	.16	.16
6.0	.18	.16	.15	.18	.16	.15	.17	.16	.15	.17	.16	.15	.17	.16	.15	.15
7.0	.17	.15	.14	.17	.15	.14	.16	.15	.14	.16	.15	.14	.16	.15	.14	.14
8.0	.16	.14	.13	.16	.14	.13	.15	.14	.13	.15	.14	.13	.15	.14	.13	.13
9.0	.15	.13	.13	.15	.13	.13	.15	.13	.12	.14	.13	.12	.14	.13	.12	.12
10.0	.14	.13	.12	.14	.13	.12	.14	.13	.12	.14	.13	.12	.13	.12	.12	.11



C Range: 0 - 360DEG
 C Interval: 5.0DEG
 Test Speed: HIGH
 Temperature: 25.3DEG
 Operators: DOBAC
 Test Date: 2017-11-07

γ Range: 0 - 90DEG
 γ Interval: 0.5DEG
 Test System: EVERFINE GO-2000B_V1 SYSTEM V1.0.260
 Humidity: 65.0%
 Test Distance: 6.960m [K=1.0000]
 Remarks:

WEC AND CCEC

NAME: Sagitta-4W-3000k	TYPE:	WEIGHT:
DIM.:	SPEC.:	SERIAL No.:
MFR.: DOBAC	SUR.:	PROTECTION ANGLE:

ρcc	80%			70%			50%			30%			10%			0
ρw	50%	30%	10%	50%	30%	10%	50%	30%	10%	50%	30%	10%	50%	30%	10%	0
ρfc	20%			20%			20%			20%			20%			0
RCR	RCR:Room Cavity Ratio						Wall Exitance Coefficients(WEC)									
0.0																
1.0	.043	.025	.008	.042	.024	.008	.039	.022	.007	.036	.021	.007	.034	.020	.006	
2.0	.042	.023	.007	.040	.022	.007	.038	.021	.007	.036	.020	.006	.034	.019	.006	
3.0	.040	.021	.006	.039	.021	.006	.036	.020	.006	.035	.019	.006	.033	.018	.006	
4.0	.038	.020	.006	.037	.019	.006	.035	.018	.006	.033	.018	.005	.032	.017	.005	
5.0	.036	.018	.005	.035	.018	.005	.033	.017	.005	.032	.017	.005	.030	.016	.005	
6.0	.034	.017	.005	.033	.017	.005	.032	.016	.005	.030	.016	.005	.029	.015	.005	
7.0	.032	.016	.005	.031	.016	.004	.030	.015	.004	.029	.015	.004	.028	.015	.004	
8.0	.031	.015	.004	.030	.015	.004	.029	.014	.004	.028	.014	.004	.027	.014	.004	
9.0	.029	.014	.004	.029	.014	.004	.028	.014	.004	.027	.013	.004	.026	.013	.004	
10.0	.028	.013	.004	.027	.013	.004	.026	.013	.004	.026	.013	.004	.025	.013	.004	

ρcc	80%			70%			50%			30%			10%			0
ρw	50%	30%	10%	50%	30%	10%	50%	30%	10%	50%	30%	10%	50%	30%	10%	0
ρfc	20%			20%			20%			20%			20%			0
RCR	RCR:Room Cavity Ratio						Ceiling Cavity Exitance Coefficients(CCEC)									
0.0	.044	.044	.044	.037	.037	.037	.026	.026	.026	.015	.015	.015	.005	.005	.005	
1.0	.040	.036	.033	.034	.031	.028	.023	.021	.020	.013	.012	.011	.004	.004	.004	
2.0	.036	.030	.026	.031	.026	.022	.021	.018	.015	.012	.011	.009	.004	.003	.003	
3.0	.034	.026	.020	.029	.023	.018	.020	.016	.012	.011	.009	.007	.004	.003	.002	
4.0	.031	.023	.016	.027	.020	.014	.018	.014	.010	.011	.008	.006	.003	.003	.002	
5.0	.029	.020	.013	.025	.017	.012	.017	.012	.008	.010	.007	.005	.003	.002	.002	
6.0	.028	.018	.011	.024	.016	.010	.016	.011	.007	.009	.006	.004	.003	.002	.001	
7.0	.026	.016	.009	.022	.014	.008	.015	.010	.006	.009	.006	.003	.003	.002	.001	
8.0	.025	.015	.008	.021	.013	.007	.015	.009	.005	.009	.005	.003	.003	.002	.001	
9.0	.023	.014	.007	.020	.012	.006	.014	.008	.004	.008	.005	.003	.003	.002	.001	
10.0	.022	.013	.006	.019	.011	.005	.013	.008	.004	.008	.005	.002	.003	.002	.001	

C Range: 0 - 360DEG
 C Interval: 5.0DEG
 Test Speed: HIGH
 Temperature:25.3DEG
 Operators:DOBAC
 Test Date:2017-11-07

γ Range: 0 - 90DEG
 γ Interval: 0.5DEG
 Test System:EVERFINE GO-2000B_V1 SYSTEM V1.0.260
 Humidity:65.0%
 Test Distance:6.960m [K=1.0000]
 Remarks:

Uncorrected UGR Table

NAME: Sagitta-4W-3000k		TYPE:					WEIGHT:				
DIM.:		SPEC.:					SERIAL No.:				
MFR.: DOBAC		SUR.:					PROTECTION ANGLE:				
ceiling/cavity	0.7	0.7	0.5	0.5	0.3	0.7	0.7	0.5	0.5	0.3	
walls	0.5	0.3	0.5	0.3	0.3	0.5	0.3	0.5	0.3	0.3	
working plane	0.2	0.2	0.2	0.2	0.2	0.2	0.2	0.2	0.2	0.2	
Room dimensions	Viewed crosswise					Viewed endwise					
x = 2H y = 2H	13.9	14.9	14.1	15.0	15.2	15.0	16.0	15.2	16.2	16.3	
3H	13.9	14.8	14.1	15.0	15.2	15.4	16.3	15.6	16.5	16.7	
4H	13.8	14.7	14.1	14.9	15.1	15.4	16.3	15.7	16.5	16.7	
6H	13.7	14.5	14.0	14.8	15.0	15.3	16.2	15.6	16.4	16.7	
8H	13.6	14.4	14.0	14.7	15.0	15.3	16.1	15.6	16.3	16.6	
12H	13.6	14.4	13.9	14.6	14.9	15.3	16.0	15.6	16.3	16.6	
4H 2H	14.1	15.0	14.4	15.2	15.5	15.1	16.0	15.4	16.2	16.4	
3H	14.2	14.9	14.5	15.2	15.5	15.6	16.4	15.9	16.6	16.9	
4H	14.1	14.8	14.5	15.1	15.4	15.7	16.4	16.0	16.7	17.0	
6H	14.0	14.6	14.4	15.0	15.3	15.6	16.2	16.0	16.6	16.9	
8H	14.0	14.5	14.4	14.9	15.3	15.6	16.1	16.0	16.5	16.9	
12H	13.9	14.4	14.3	14.8	15.2	15.5	16.0	15.9	16.4	16.8	
8H 4H	14.1	14.6	14.5	15.0	15.4	15.6	16.2	16.0	16.5	16.9	
6H	14.0	14.4	14.4	14.8	15.3	15.5	16.0	16.0	16.4	16.8	
8H	13.9	14.3	14.4	14.8	15.2	15.5	15.9	15.9	16.3	16.8	
12H	13.9	14.2	14.4	14.7	15.1	15.4	15.8	15.9	16.2	16.7	
12H 4H	14.0	14.5	14.4	14.9	15.3	15.6	16.1	16.0	16.4	16.8	
6H	13.9	14.3	14.4	14.8	15.2	15.5	15.9	15.9	16.3	16.8	
8H	13.9	14.2	14.4	14.7	15.1	15.4	15.8	15.9	16.2	16.7	
Variations with the observer position at spacings:											
S = 1.0H	+ 1.1 / - 1.7					+ 0.9 / - 1.3					
1.5H	+ 0.7 / - 1.1					+ 1.1 / - 0.7					
2.0H	+ 2.0 / - 3.1					+ 1.5 / - 2.2					

CIE Pub.117 Corrected 609.2 lm Total Lamp Luminous Flux. (8log(F/F0) = -1.7)

C Range: 0 - 360DEG
C Interval: 5.0DEG
Test Speed: HIGH
Temperature: 25.3DEG
Operators: DOBAC
Test Date: 2017-11-07

γ Range: 0 - 90DEG
γ Interval: 0.5DEG
Test System: EVERFINE GO-2000B_V1 SYSTEM V1.0.260
Humidity: 65.0%
Test Distance: 6.960m [K=1.0000]
Remarks:

UTILIZATION FACTORS TABLE

NAME: Sagitta-4W-3000k	TYPE:	WEIGHT:
DIM.:	SPEC.:	SERIAL No.:
MFR.: DOBAC	SUR.:	PROTECTION ANGLE:

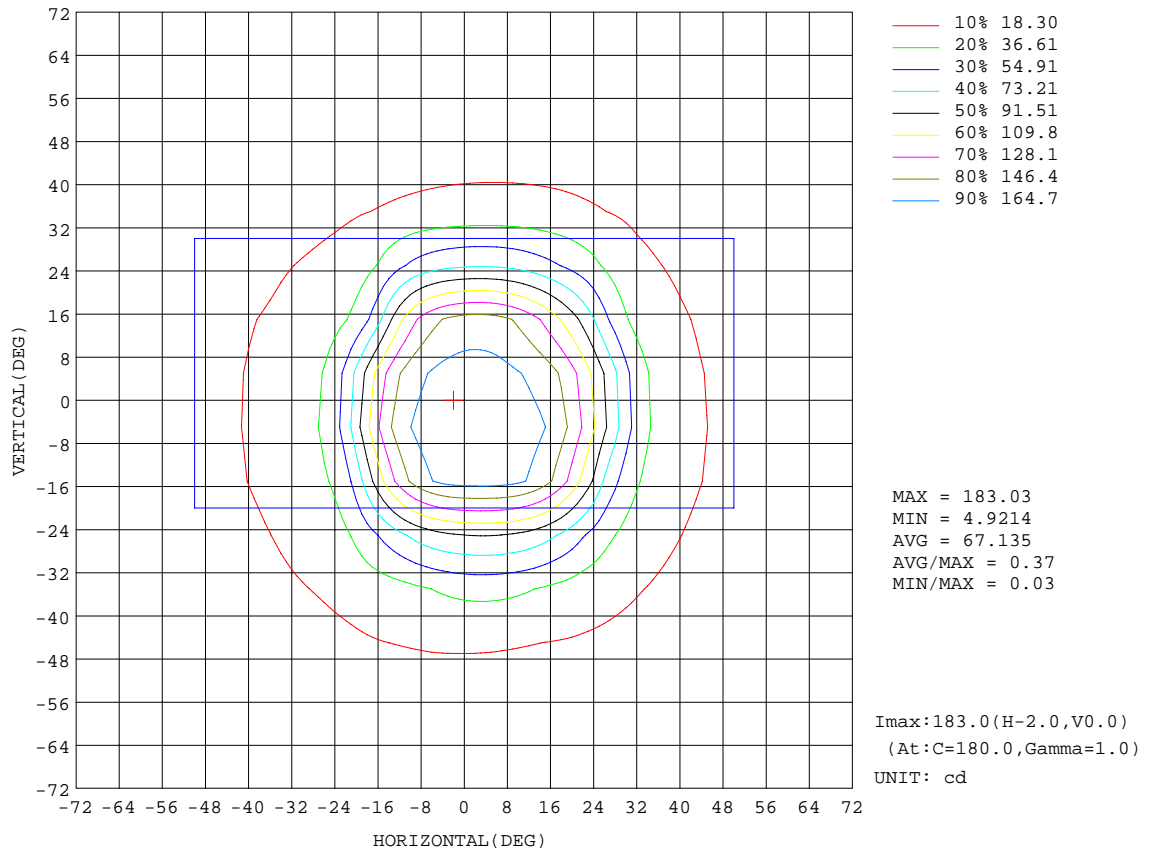
REFLECTANCE										
Ceiling	0.8	0.8	0.8	0.7	0.7	0.7	0.5	0.5	0.5	0
Walls	0.7	0.5	0.3	0.7	0.5	0.3	0.7	0.5	0.3	0
Working plane	0.2	0.2	0.2	0.2	0.2	0.2	0.2	0.2	0.2	0
ROOM INDEX	UTILIZATION FACTORS(PERCENT) $k(RI) \times RCR = 5$									
k = 0.60	19	17	16	18	17	16	18	17	16	15
0.80	20	19	18	20	19	18	20	19	18	17
1.00	22	20	19	22	20	19	21	20	19	18
1.25	23	21	21	23	21	20	22	21	20	19
1.50	24	22	21	23	22	21	23	22	21	20
2.00	24	23	22	24	23	22	23	23	22	21
2.50	25	24	23	25	24	23	24	23	22	21
3.00	25	24	24	25	24	23	24	23	23	21
4.00	26	25	25	25	25	24	25	24	24	22
5.00	26	26	25	26	25	25	25	24	24	22
ROOM INDEX	UF(total)									Direct
According to DIN EN 13032-2 2004			Suspended				SHRNM = 1.25			

C Range: 0 - 360DEG
C Interval: 5.0DEG
Test Speed: HIGH
Temperature:25.3DEG
Operators:DOBAC
Test Date:2017-11-07

γ Range: 0 - 90DEG
 γ Interval: 0.5DEG
Test System:EVERFINE GO-2000B_V1 SYSTEM V1.0.260
Humidity:65.0%
Test Distance:6.960m [K=1.0000]
Remarks:

ISOCANDELA DIAGRAM

NAME: Sagitta-4W-3000k	TYPE:	WEIGHT:
DIM.:	SPEC.:	SERIAL No.:
MFR.: DOBAC	SUR.:	PROTECTION ANGLE:

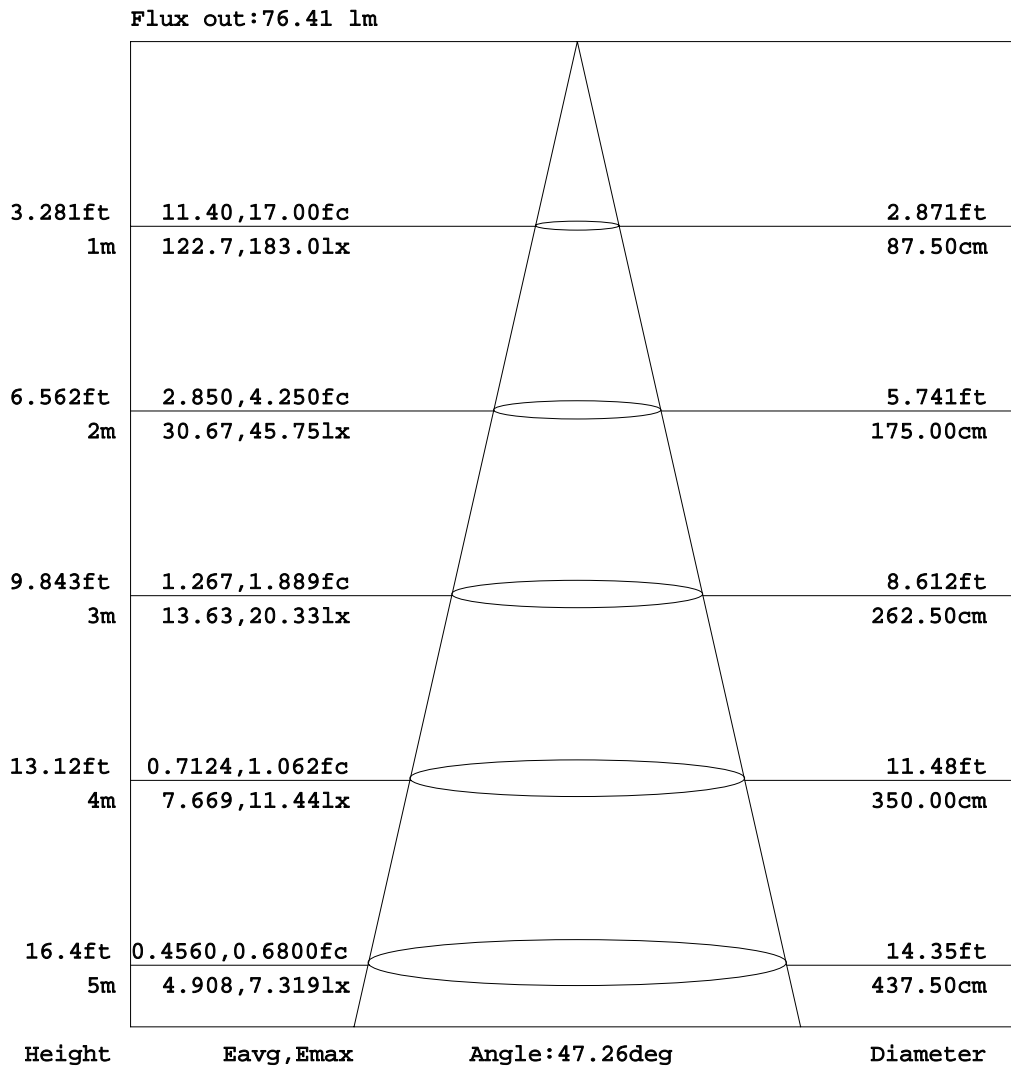


C Range: 0 - 360DEG
 C Interval: 5.0DEG
 Test Speed: HIGH
 Temperature: 25.3DEG
 Operators: DOBAC
 Test Date: 2017-11-07

γ Range: 0 - 90DEG
 γ Interval: 0.5DEG
 Test System: EVERFINE GO-2000B_V1 SYSTEM V1.0.260
 Humidity: 65.0%
 Test Distance: 6.960m [K=1.0000]
 Remarks:

AAI Figure

NAME: Sagitta-4W-3000k	TYPE:	WEIGHT:
DIM.:	SPEC.:	SERIAL No.:
MFR.: DOBAC	SUR.:	PROTECTION ANGLE:



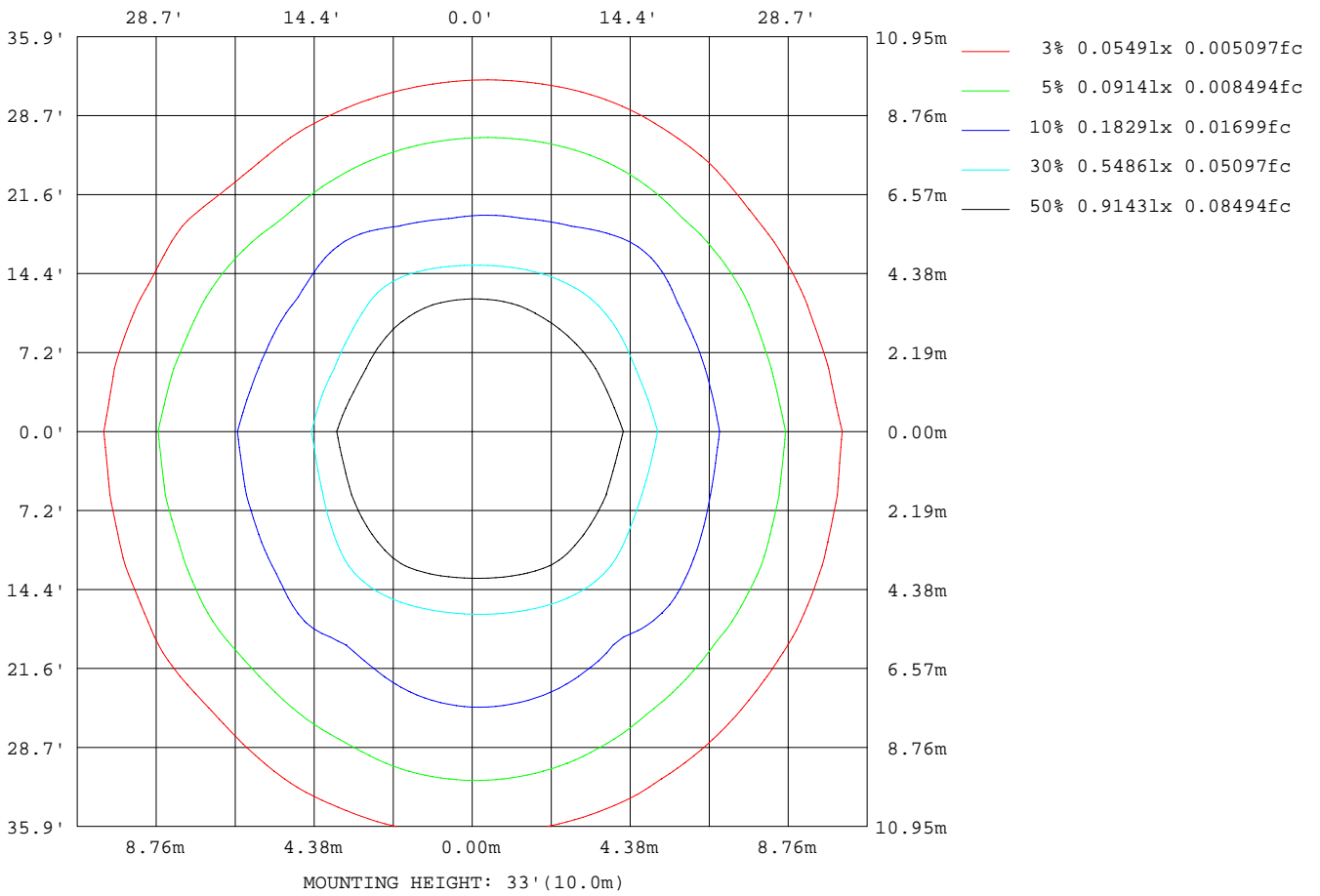
Note: The Curves indicate the illuminated area and the average illumination when the luminaire is at different distance.

C Range: 0 - 360DEG
C Interval: 5.0DEG
Test Speed: HIGH
Temperature: 25.3DEG
Operators: DOBAC
Test Date: 2017-11-07

γ Range: 0 - 90DEG
γ Interval: 0.5DEG
Test System: EVERFINE GO-2000B_V1 SYSTEM V1.0.260
Humidity: 65.0%
Test Distance: 6.960m [K=1.0000]
Remarks:

ISOLUX DIAGRAM

NAME: Sagitta-4W-3000k	TYPE:	WEIGHT:
DIM.:	SPEC.:	SERIAL No.:
MFR.: DOBAC	SUR.:	PROTECTION ANGLE:



C Range: 0 - 360DEG
C Interval: 5.0DEG
Test Speed: HIGH
Temperature: 25.3DEG
Operators: DOBAC
Test Date: 2017-11-07

γ Range: 0 - 90DEG
 γ Interval: 0.5DEG
Test System: EVERFINE GO-2000B_V1 SYSTEM V1.0.260
Humidity: 65.0%
Test Distance: 6.960m [K=1.0000]
Remarks:

Average Luminance Table(CIBSE)

NAME: Sagitta-4W-3000k	TYPE:	WEIGHT:
DIM.:	SPEC.:	SERIAL No.:
MFR.: DOBAC	SUR.:	PROTECTION ANGLE:

Parameter description for average Luminance	Symbol	Value	Unit
Luminance in Azimuth Plane	Bc	refer Table 2	cd/sq.m.
Intensity at angle Gamma in given azimuth plane	I	from data	cd/klm
Number of lamps	N	1	
Output of each lamp(initial lumens as specified)	F	609.237	lm
Multiplying factor	K	1	
Luminous area in horizontal plane used in calculations	A	0.006	sq.m.
Angle to the downward vertical from light centre	Gamma	from data	deg

Table 1. Calculation parameters for determination of CIBSE LG3:1996 Average Luminance

G deg	C plane(deg)																		
	0	10	20	30	40	50	60	70	80	90	100	110	120	130	140	150	160	170	180
55	2457	2607	2746	2930	3140	3308	3376	3319	3298	3228	3223	3198	3020	2584	2351	2183	1977	1823	1701
60	1562	1760	2075	2248	2492	2668	2643	2496	2399	2208	2177	2196	2211	2014	1765	1638	1470	1313	1181
65	933	1018	1230	1507	1855	1948	1948	1994	2024	1902	1815	1660	1512	1450	1361	1233	1054	875	738
70	533	578	693	870	1126	1434	1556	1603	1579	1473	1417	1327	1199	1099	935	784	661	542	480
75	163	210	314	354	743	865	942	993	873	787	791	818	738	723	661	373	374	279	256
80	76	107	112	160	202	183	226	149	37	0	33	122	183	223	308	281	265	220	172
85	0	9	28	0	0	0	0	0	0	0	0	0	0	0	0	0	168	193	196

Table 2. Average Luminance(cd/sq.m.) for defined C plane,Gamma angle

CIBSE Category	Gamma (deg)	Average Luminance		Patch Luminance	
		maximum	specified	maximum	specified
		calculated	maximum	measured	maximum
Category 1	55 to 90	3376	200	---	500
Category 2	65 to 90	2024	200	---	500
Category 3	75 to 90	993	200	---	500

Table 3. Tabulation of Average and Patch Luminance(cd/sq.m.) for defined CIBSE categories

No match

C Range: 0 - 360DEG
C Interval: 5.0DEG
Test Speed: HIGH
Temperature:25.3DEG
Operators:DOBAC
Test Date:2017-11-07

γ Range: 0 - 90DEG
γ Interval: 0.5DEG
Test System:EVERFINE GO-2000B_V1 SYSTEM V1.0.260
Humidity:65.0%
Test Distance:6.960m [K=1.0000]
Remarks:

Average Luminance Table(CIBSE)

NAME: Sagitta-4W-3000k	TYPE:	WEIGHT:
DIM.:	SPEC.:	SERIAL No.:
MFR.: DOBAC	SUR.:	PROTECTION ANGLE:

Parameter description for average Luminance	Symbol	Value	Unit
Luminance in Azimuth Plane	Bc	refer Table 2	cd/sq.m.
Intensity at angle Gamma in given azimuth plane	I	from data	cd/klm
Number of lamps	N	1	
Output of each lamp(initial lumens as specified)	F	609.237	lm
Multiplying factor	K	1	
Luminous area in horizontal plane used in calculations	A	0.006	sq.m.
Angle to the downward vertical from light centre	Gamma	from data	deg

Table 1. Calculation parameters for determination of CIBSE LG3:2001 Average Luminance

G deg	C plane(deg)																		
	0	10	20	30	40	50	60	70	80	90	100	110	120	130	140	150	160	170	180
55	2457	2607	2746	2930	3140	3308	3376	3319	3298	3228	3223	3198	3020	2584	2351	2183	1977	1823	1701
60	1562	1760	2075	2248	2492	2668	2643	2496	2399	2208	2177	2196	2211	2014	1765	1638	1470	1313	1181
65	933	1018	1230	1507	1855	1948	1948	1994	2024	1902	1815	1660	1512	1450	1361	1233	1054	875	738
70	533	578	693	870	1126	1434	1556	1603	1579	1473	1417	1327	1199	1099	935	784	661	542	480
75	163	210	314	354	743	865	942	993	873	787	791	818	738	723	661	373	374	279	256
80	76	107	112	160	202	183	226	149	37	0	33	122	183	223	308	281	265	220	172
85	0	9	28	0	0	0	0	0	0	0	0	0	0	0	0	0	168	193	196

Table 2. Average Luminance(cd/sq.m.) for defined C plane,Gamma angle

range (deg)	Maximum measured	Average Luminance(cd/sq.m)			
		Maximum limit for screen type & software category used			
		Type I,II screen Some neg.s'ware	Type I,II screen Only pos.s'ware	Type III screen Some neg.s'ware	Type III screen Only pos.s'ware
55 to 90	3376	1000	1500	200	500
65 to 90	2024	1000	1500	200	500

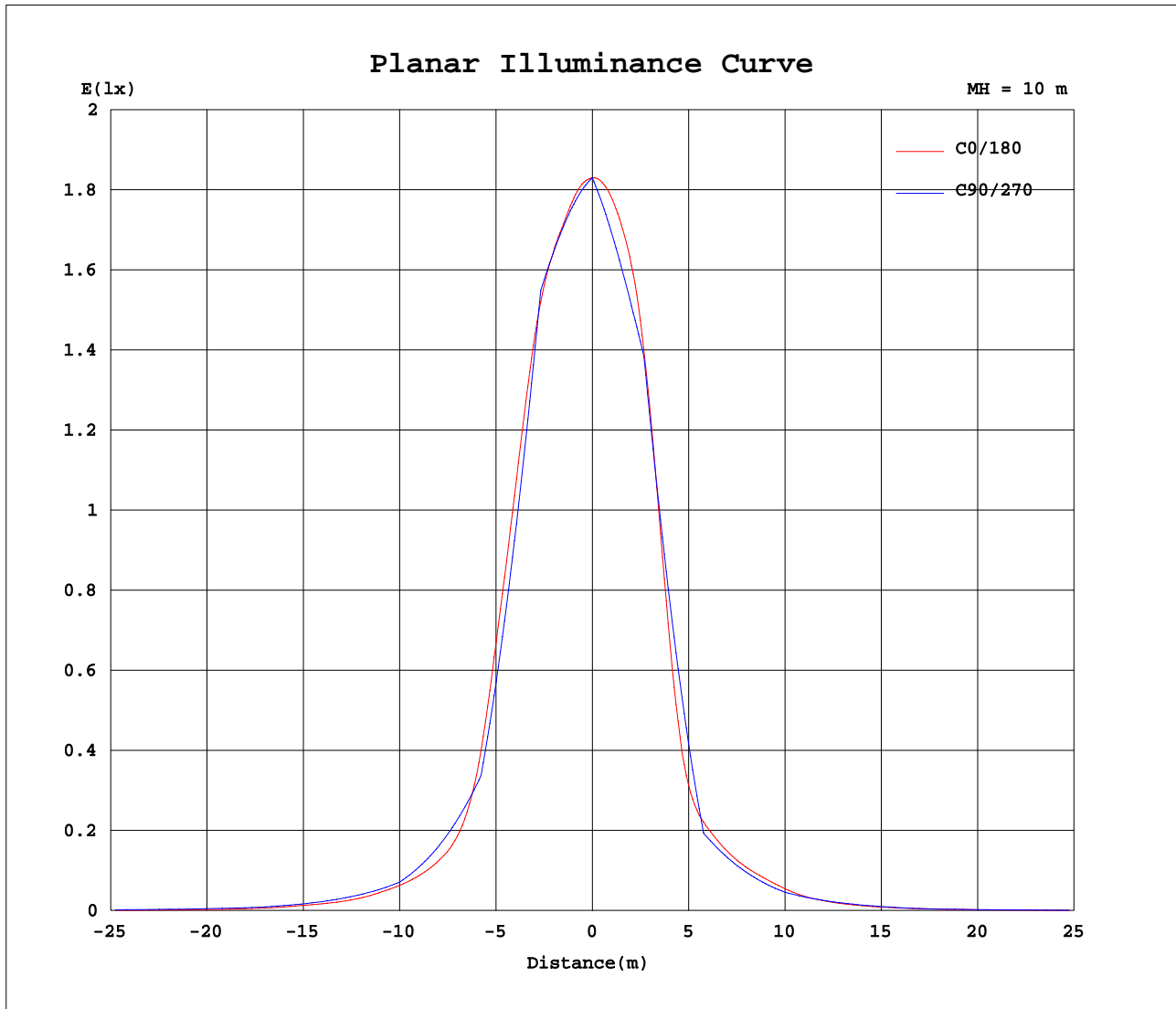
Table 3. Tabulation of average luminance(cd/sq.m.) and luminance limits

No match

C Range: 0 - 360DEG
C Interval: 5.0DEG
Test Speed: HIGH
Temperature:25.3DEG
Operators:DOBAC
Test Date:2017-11-07

γ Range: 0 - 90DEG
γ Interval: 0.5DEG
Test System:EVERFINE GO-2000B_V1 SYSTEM V1.0.260
Humidity:65.0%
Test Distance:6.960m [K=1.0000]
Remarks:

Planar Illuminance Curve



C Range: 0 - 360DEG
 C Interval: 5.0DEG
 Test Speed: HIGH
 Temperature: 25.3DEG
 Operators: DOBAC
 Test Date: 2017-11-07

γ Range: 0 - 90DEG
 γ Interval: 0.5DEG
 Test System: EVERFINE GO-2000B_V1 SYSTEM V1.0.260
 Humidity: 65.0%
 Test Distance: 6.960m [K=1.0000]
 Remarks:

LUMINOUS DISTRIBUTION INTENSITY DATA

NAME: Sagitta-4W-3000k	TYPE:	WEIGHT:
DIM.:	SPEC.:	SERIAL No.:
MFR.: DOBAC	SUR.:	PROTECTION ANGLE:

Table--1

UNIT: cd

C(DEG) γ (DEG)	0	5	10	15	20	25	30	35	40	45	50	55	60	65	70	75	80	85	90
0	183	183	183	183	183	183	183	183	183	183	183	183	183	183	183	183	183	183	183
5	181	181	180	180	180	180	180	180	180	180	179	179	179	179	179	179	179	179	179
10	176	176	175	175	174	174	174	174	174	175	175	175	176	176	176	176	176	176	176
15	169	167	166	165	164	164	165	166	166	168	169	170	171	172	172	172	172	172	172
20	144	141	139	138	138	140	142	145	149	153	154	150	146	143	140	137	134	133	132
25	106	102	98.9	97.9	99.0	102	106	112	112	112	111	109	106	103	100	97.2	94.8	93.1	91.9
30	61.7	58.9	57.8	57.9	59.2	61.3	63.8	67.4	70.8	71.7	71.7	69.9	66.9	63.6	60.2	57.3	55.0	53.3	52.0
35	33.9	33.0	33.0	33.6	34.8	36.1	37.6	39.7	41.0	41.4	39.4	36.1	37.2	38.9	40.4	41.3	41.8	41.9	41.3
40	23.9	23.5	23.6	24.1	24.7	24.7	25.2	25.9	26.0	25.3	25.9	26.7	28.4	29.4	30.3	30.8	31.0	31.0	30.7
45	17.8	17.7	17.9	18.4	18.5	18.7	19.0	19.1	19.4	19.8	20.3	20.6	20.9	21.3	21.1	20.7	20.3	20.1	20.1
50	12.3	12.3	12.8	13.4	13.6	13.8	14.3	14.6	14.9	15.1	15.4	15.5	15.5	15.5	15.4	15.5	15.5	15.6	15.6
55	8.45	8.47	8.97	9.07	9.45	9.94	10.1	10.6	10.8	11.2	11.4	11.6	11.6	11.5	11.4	11.4	11.3	11.2	11.1
60	4.69	4.79	5.28	5.62	6.22	6.37	6.74	7.17	7.48	7.81	8.00	8.04	7.93	7.71	7.49	7.32	7.20	6.90	6.62
65	2.37	2.41	2.58	2.80	3.12	3.40	3.82	4.35	4.70	4.85	4.94	4.82	4.94	5.01	5.06	5.09	5.13	5.00	4.82
70	1.09	1.11	1.19	1.32	1.42	1.62	1.78	2.13	2.31	2.67	2.94	3.07	3.19	3.27	3.29	3.26	3.24	3.14	3.02
75	0.25	0.29	0.33	0.37	0.49	0.48	0.55	0.90	1.15	1.28	1.34	1.37	1.46	1.55	1.54	1.44	1.36	1.27	1.22
80	0.08	0.09	0.11	0.10	0.12	0.12	0.17	0.23	0.21	0.18	0.19	0.21	0.24	0.21	0.16	0.09	0.04	0.01	0.00
85	0.00	0.01	0.00	0.02	0.01	0.01	0.00	0.00	0.00	0.00	0.00	0.00	0.00	0.00	0.00	0.00	0.00	0.00	0.00
90	0.00	0.00	0.00	0.00	0.00	0.00	0.00	0.00	0.00	0.00	0.00	0.00	0.00	0.00	0.00	0.00	0.00	0.00	0.00

C Range: 0 - 360DEG
C Interval: 5.0DEG
Test Speed: HIGH
Temperature:25.3DEG
Operators:DOBAC
Test Date:2017-11-07

γ Range: 0 - 90DEG
γ Interval: 0.5DEG
Test System:EVERFINE GO-2000B_V1 SYSTEM V1.0.260
Humidity:65.0%
Test Distance:6.960m [K=1.0000]
Remarks:

LUMINOUS DISTRIBUTION INTENSITY DATA

NAME: Sagitta-4W-3000k	TYPE:	WEIGHT:
DIM.:	SPEC.:	SERIAL No.:
MFR.: DOBAC	SUR.:	PROTECTION ANGLE:

Table--2

UNIT: cd

C(DEG) γ (DEG)	95	100	105	110	115	120	125	130	135	140	145	150	155	160	165	170	175	180	185
0	183	183	183	183	183	183	183	183	183	183	183	183	183	183	183	183	183	183	183
5	179	179	179	179	179	179	179	179	179	180	180	180	180	180	180	181	181	181	180
10	175	175	175	175	174	174	173	173	172	172	171	171	171	171	172	173	174	175	172
15	172	171	170	169	167	165	163	160	157	154	152	151	149	149	149	150	152	155	149
20	132	132	133	134	135	135	135	133	129	122	116	111	107	104	102	102	103	106	100
25	91.5	91.6	92.1	92.7	93.0	92.5	90.9	87.6	83.0	77.0	70.1	63.2	58.2	54.9	52.9	51.7	51.5	52.7	50.3
30	51.0	50.7	51.2	52.4	53.8	54.9	54.8	52.7	48.2	43.1	39.0	36.8	35.7	34.8	34.0	33.6	33.6	34.0	32.7
35	40.2	38.6	36.6	34.4	32.5	31.3	30.9	31.9	30.6	29.3	28.8	28.5	28.3	27.7	27.0	26.6	26.6	27.0	25.9
40	30.1	29.3	28.2	26.9	26.0	25.3	24.5	23.8	23.4	23.1	22.8	22.3	21.9	21.9	21.6	21.1	21.1	21.3	20.6
45	20.3	20.6	20.6	20.5	20.3	19.7	19.0	18.3	17.9	17.9	17.6	16.8	16.4	16.2	16.1	15.4	15.2	15.5	14.8
50	15.6	15.7	15.6	15.5	15.2	14.5	13.8	13.1	12.8	12.6	12.1	11.4	11.0	10.6	10.3	9.88	9.51	9.56	9.02
55	11.1	11.1	11.0	11.0	10.8	10.4	9.73	8.89	8.19	8.09	7.84	7.51	7.13	6.80	6.52	6.27	5.91	5.85	5.54
60	6.55	6.53	6.53	6.59	6.65	6.63	6.38	6.04	5.65	5.30	4.98	4.91	4.67	4.41	4.14	3.94	3.65	3.54	3.28
65	4.73	4.60	4.42	4.21	4.02	3.83	3.65	3.68	3.62	3.45	3.26	3.13	2.91	2.67	2.47	2.22	2.01	1.87	1.75
70	2.96	2.91	2.82	2.72	2.60	2.46	2.35	2.26	2.16	1.92	1.73	1.61	1.51	1.36	1.24	1.11	1.03	0.99	0.96
75	1.21	1.23	1.26	1.27	1.21	1.15	1.11	1.12	1.13	1.03	0.81	0.58	0.59	0.58	0.47	0.43	0.39	0.40	0.38
80	0.01	0.03	0.08	0.13	0.17	0.19	0.21	0.23	0.28	0.32	0.34	0.29	0.27	0.28	0.26	0.23	0.21	0.18	0.16
85	0.00	0.00	0.00	0.00	0.00	0.00	0.00	0.00	0.00	0.00	0.00	0.00	0.05	0.09	0.11	0.10	0.09	0.10	0.08
90	0.00	0.00	0.00	0.00	0.00	0.00	0.00	0.00	0.00	0.00	0.00	0.00	0.00	0.00	0.00	0.00	0.00	0.00	0.00

C Range: 0 - 360DEG
C Interval: 5.0DEG
Test Speed: HIGH
Temperature:25.3DEG
Operators:DOBAC
Test Date:2017-11-07

γ Range: 0 - 90DEG
γ Interval: 0.5DEG
Test System:EVERFINE GO-2000B_V1 SYSTEM V1.0.260
Humidity:65.0%
Test Distance:6.960m [K=1.0000]
Remarks:

LUMINOUS DISTRIBUTION INTENSITY DATA

NAME: Sagitta-4W-3000k	TYPE:	WEIGHT:
DIM.:	SPEC.:	SERIAL No.:
MFR.: DOBAC	SUR.:	PROTECTION ANGLE:

Table--3

UNIT: cd

C(DEG) γ (DEG)	190	195	200	205	210	215	220	225	230	235	240	245	250	255	260	265	270	275	280
0	183	183	183	183	183	183	183	183	183	183	183	183	183	183	183	183	183	183	183
5	179	179	178	177	176	176	175	175	174	174	174	173	173	173	173	173	173	173	173
10	169	167	165	164	162	162	161	161	161	161	161	162	162	162	163	163	163	164	164
15	145	141	138	136	135	135	136	138	139	142	144	146	148	150	152	153	154	154	154
20	95.5	92.1	89.7	88.3	87.9	89.4	92.9	98.3	104	108	111	112	112	112	112	112	112	113	115
25	49.1	48.4	47.9	47.4	46.8	46.1	50.0	55.3	61.6	67.5	71.0	72.8	72.8	72.1	71.3	70.8	71.1	72.0	73.7
30	31.7	31.1	30.7	30.5	30.1	30.1	30.9	32.7	35.2	37.7	39.4	38.9	36.6	33.9	31.5	30.0	29.8	30.9	33.2
35	25.1	24.6	24.3	23.9	23.6	23.2	22.9	22.7	22.6	21.8	21.9	22.3	22.7	23.1	23.4	23.8	24.2	24.6	24.9
40	20.0	19.8	19.4	18.9	18.7	18.4	17.9	17.3	17.1	17.2	17.4	17.6	17.8	17.9	18.1	18.3	18.6	18.9	19.2
45	14.7	15.1	14.5	13.9	13.9	14.2	13.8	13.1	12.8	12.9	13.2	13.3	13.2	13.1	12.9	12.9	13.0	13.2	13.5
50	8.88	8.89	8.79	8.56	8.37	9.12	9.38	8.93	8.48	8.62	9.28	9.73	9.68	9.66	9.68	9.73	9.85	9.99	10.2
55	5.52	5.36	5.22	5.11	5.12	5.26	5.37	5.00	5.27	5.69	6.30	6.67	6.65	6.61	6.61	6.66	6.75	6.86	7.00
60	3.22	3.08	2.99	3.04	2.99	2.84	3.10	3.27	3.37	3.47	3.66	3.74	3.66	3.58	3.56	3.58	3.64	3.72	3.85
65	1.72	1.66	1.69	1.66	1.60	1.69	1.82	1.83	1.74	1.66	1.83	1.97	2.11	2.23	2.34	2.43	2.49	2.52	2.55
70	0.90	0.91	0.82	0.89	0.82	0.80	0.85	0.94	0.97	1.03	1.10	1.16	1.20	1.25	1.29	1.32	1.34	1.37	1.39
75	0.37	0.36	0.36	0.39	0.32	0.34	0.42	0.48	0.47	0.46	0.43	0.39	0.34	0.29	0.24	0.21	0.20	0.21	0.24
80	0.13	0.15	0.14	0.18	0.15	0.12	0.09	0.09	0.09	0.07	0.05	0.04	0.02	0.01	0.01	0.00	0.00	0.00	0.01
85	0.08	0.05	0.04	0.02	0.00	0.00	0.00	0.00	0.00	0.00	0.00	0.00	0.00	0.00	0.00	0.00	0.00	0.00	0.00
90	0.00	0.00	0.00	0.00	0.00	0.00	0.00	0.00	0.00	0.00	0.00	0.00	0.00	0.00	0.00	0.00	0.00	0.00	0.00

C Range: 0 - 360DEG
C Interval: 5.0DEG
Test Speed: HIGH
Temperature:25.3DEG
Operators:DOBAC
Test Date:2017-11-07

γ Range: 0 - 90DEG
γ Interval: 0.5DEG
Test System:EVERFINE GO-2000B_V1 SYSTEM V1.0.260
Humidity:65.0%
Test Distance:6.960m [K=1.0000]
Remarks:

LUMINOUS DISTRIBUTION INTENSITY DATA

NAME: Sagitta-4W-3000k	TYPE:	WEIGHT:
DIM.:	SPEC.:	SERIAL No.:
MFR.: DOBAC	SUR.:	PROTECTION ANGLE:

Table--4

UNIT: cd

C(DEG)\ γ (DEG)	285	290	295	300	305	310	315	320	325	330	335	340	345	350	355				
0	183	183	183	183	183	183	183	183	183	183	183	183	183	183	183				
5	173	174	174	174	174	175	175	176	176	177	177	178	178	179	180				
10	164	164	164	164	164	164	164	165	165	166	167	169	170	172	174				
15	154	153	152	151	150	149	149	149	149	150	152	154	157	161	164				
20	116	118	120	122	124	126	125	124	124	124	125	127	130	134	139				
25	76.0	78.6	81.2	83.7	86.1	88.0	89.5	90.7	91.2	90.1	89.6	90.0	91.7	95.1	100.0				
30	36.7	40.8	45.2	49.5	53.3	56.2	58.0	58.0	55.9	53.2	51.8	52.1	52.9	54.6	57.4				
35	25.3	25.6	25.8	26.0	26.7	31.5	33.7	33.7	32.4	30.5	29.7	30.5	31.1	31.6	32.4				
40	19.6	20.0	20.3	20.5	20.6	20.6	20.4	21.1	21.3	21.6	21.9	22.1	22.1	22.3	22.9				
45	14.0	14.5	15.0	15.4	15.6	15.6	15.6	15.4	15.4	15.7	15.9	16.1	16.5	16.6	17.0				
50	10.4	10.6	10.8	10.9	11.0	11.3	11.0	10.9	11.0	11.2	11.1	11.3	11.3	11.4	11.6				
55	7.21	7.39	7.53	7.62	7.71	7.46	6.93	6.91	7.02	7.07	7.36	7.21	7.22	7.67	7.84				
60	4.04	4.19	4.32	4.47	4.59	4.48	4.32	4.02	3.66	4.02	4.08	3.91	3.99	4.08	4.22				
65	2.54	2.45	2.26	2.05	1.82	2.07	2.28	2.18	2.01	1.96	2.03	2.05	2.12	2.13	2.20				
70	1.41	1.38	1.26	1.19	1.10	1.10	1.02	0.81	0.76	0.85	0.92	0.85	0.96	0.96	1.00				
75	0.28	0.33	0.31	0.41	0.46	0.50	0.45	0.34	0.22	0.19	0.28	0.27	0.26	0.26	0.26				
80	0.01	0.02	0.01	0.04	0.06	0.06	0.03	0.02	0.04	0.06	0.07	0.05	0.06	0.08	0.07				
85	0.00	0.00	0.00	0.00	0.00	0.00	0.00	0.00	0.00	0.00	0.00	0.00	0.01	0.00	0.01				
90	0.00	0.00	0.00	0.00	0.00	0.00	0.00	0.00	0.00	0.00	0.00	0.00	0.00	0.00	0.00				

C Range: 0 - 360DEG
C Interval: 5.0DEG
Test Speed: HIGH
Temperature: 25.3DEG
Operators: DOBAC
Test Date: 2017-11-07

γ Range: 0 - 90DEG
γ Interval: 0.5DEG
Test System: EVERFINE GO-2000B_V1 SYSTEM V1.0.260
Humidity: 65.0%
Test Distance: 6.960m [K=1.0000]
Remarks: