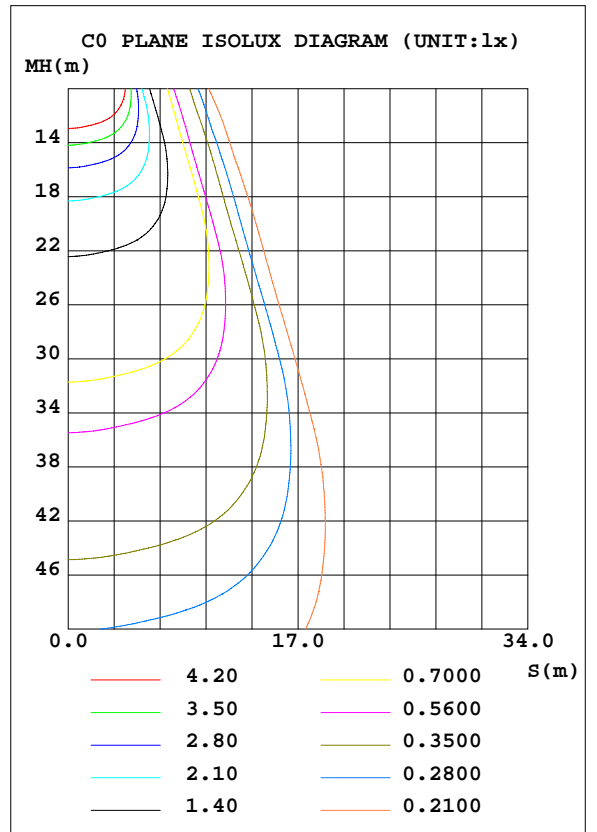
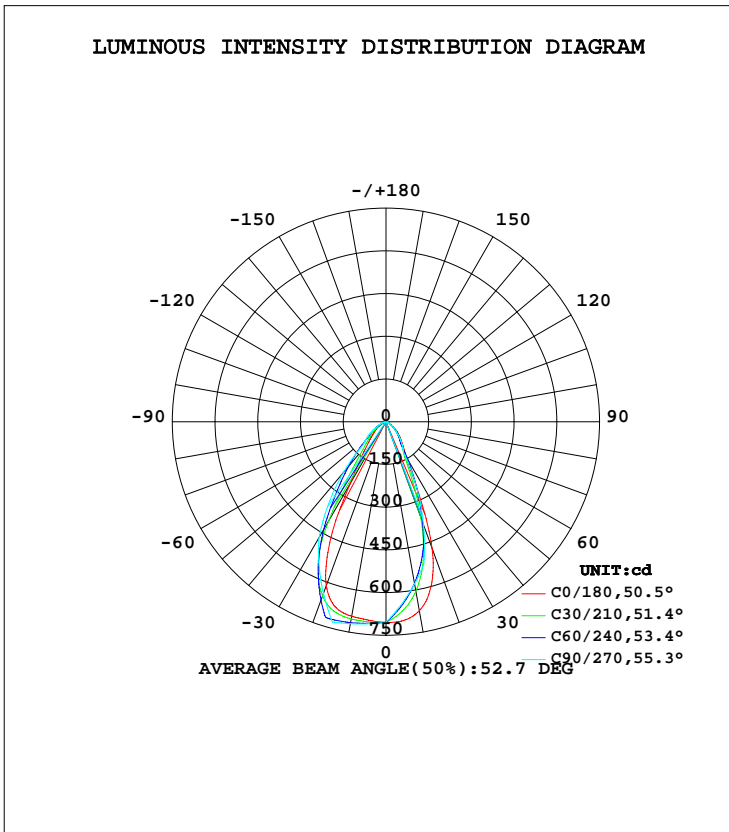


LUMINAIRE PHOTOMETRIC TEST REPORT

NAME: Sagitta-12W-3000k	TYPE:	WEIGHT:
DIM.:	SPEC.:	SERIAL No.:
MFR.: DOBAC	SUR.:	PROTECTION ANGLE:

DATA OF LAMP		PHOTOMETRIC DATA				Eff: 60.06 lm/W
MODEL	Sagitta-12W-3000k	I <sub>max</sub> (cd)	729.7	S/MH(C0/180)	0.81	
NOMINAL POWER(W)	12	LOR(%)	100.0	S/MH(C90/270)	1.02	
RATED VOLTAGE(V)	228	TOTAL FLUX(lm)	624.62	η UP, DN(C0-180)	0.0, 61.1	
NOMINAL FLUX(lm)	624.625	CIE CLASS	DIRECT	η UP, DN(C180-360)	0.0, 38.9	
LAMPS INSIDE	1	η up(%)	0.0	CIBSE SHR NOM	0.75	
TEST VOLTAGE(V)	227.5	η down(%)	100.0	CIBSE SHR MAX	0.75	



C Range: 0 - 360DEG  
C Interval: 5.0DEG  
Test Speed: HIGH  
Temperature:25.3DEG  
Operators:DOBAC  
Test Date:2017-11-07

γ Range: 0 - 90DEG  
γ Interval: 0.5DEG  
Test System:EVERFINE GO-2000B\_V1 SYSTEM V1.0.260  
Humidity:65.0%  
Test Distance:6.960m [K=1.0000]  
Remarks:

**ZONAL FLUX DIAGRAM**

ZONAL FLUX DIAGRAM:

$\gamma$	C0	C45	C90	C135	C180	C225	C270	C315	$\gamma$	$\Phi$ zone	$\Phi$ total	$\%lum, lamp$
5	699.4	708.1	712.1	707.0	700.4	654.7	641.3	658.4	0- 5	16.53	16.53	2.65,2.65
10	693.3	709.5	719.8	697.3	674.1	585.3	578.4	607.0	5- 10	47.88	64.42	10.3,10.3
15	676.1	705.2	727.6	674.7	605.2	489.6	515.4	538.7	10- 15	75.25	139.7	22.4,22.4
20	613.1	687.8	642.0	637.9	474.4	361.4	384.7	438.8	15- 20	93.54	233.2	37.3,37.3
25	467.2	573.1	556.3	475.4	257.8	227.7	254.0	308.3	20- 25	94.03	327.2	52.4,52.4
30	254.6	416.8	470.7	281.2	140.2	138.1	123.3	195.7	25- 30	78.25	405.5	64.9,64.9
35	148.7	254.7	351.4	155.8	104.7	92.29	99.42	122.0	30- 35	58.57	464.1	74.3,74.3
40	96.54	137.8	232.0	108.0	80.81	68.51	75.52	80.98	35- 40	44.83	508.9	81.5,81.5
45	68.11	101.7	112.7	84.96	61.66	53.73	51.63	62.06	40- 45	34.48	543.4	87,87
50	50.04	74.83	87.41	63.94	46.59	40.09	39.87	45.70	45- 50	26.26	569.6	91.2,91.2
55	38.88	54.10	62.13	43.60	29.63	26.67	28.12	32.16	50- 55	20.64	590.3	94.5,94.5
60	22.51	37.53	36.86	28.70	17.33	17.70	16.36	22.35	55- 60	14.87	605.1	96.9,96.9
65	10.84	22.69	27.28	17.41	9.977	9.866	11.14	13.44	60- 65	9.431	614.6	98.4,98.4
70	4.318	12.05	17.71	10.09	4.314	4.834	5.922	6.774	65- 70	5.717	620.3	99.3,99.3
75	1.046	6.009	8.140	5.717	2.170	2.580	0.7011	3.093	70- 75	2.995	623.3	99.8,99.8
80	0.4330	1.248	0	1.873	1.608	0.6836	0	0.3707	75- 80	1.105	624.4	100,100
85	0.2296	0	0	0	0.8825	0	0	0	80- 85	0.2141	624.6	100,100
90	0	0	0	0	0	0	0	0	85- 90	0.0217	624.6	100,100
95									90- 95			
100									95-100			
105									100-105			
110									105-110			
115									110-115			
120									115-120			
125									120-125			
130									125-130			
135									130-135			
140									135-140			
145									140-145			
150									145-150			
155									150-155			
160									155-160			
165									160-165			
170									165-170			
175									170-175			
180									175-180			
DEG	LUMINOUS INTENSITY:cd								UNIT:lm			

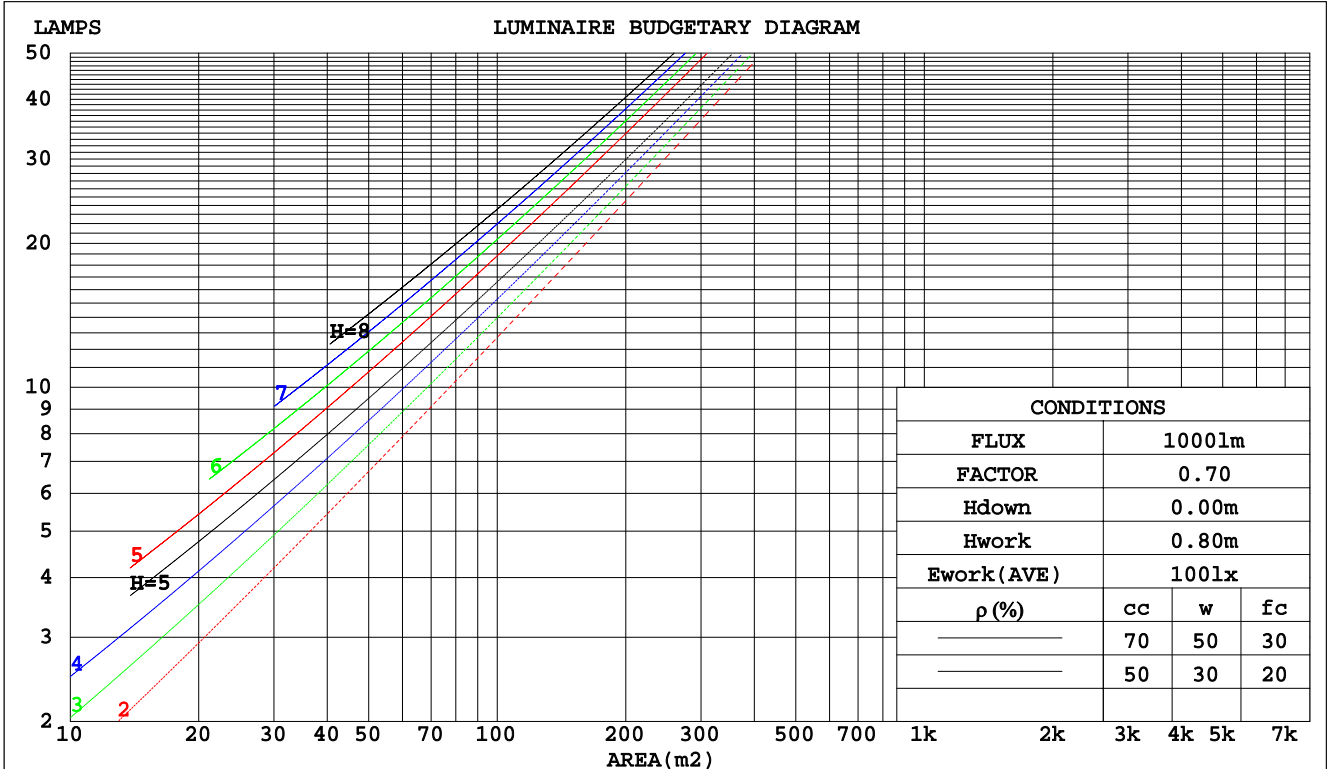
C Range: 0 - 360DEG  
C Interval: 5.0DEG  
Test Speed: HIGH  
Temperature:25.3DEG  
Operators:DOBAC  
Test Date:2017-11-07

$\gamma$  Range: 0 - 90DEG  
 $\gamma$  Interval: 0.5DEG  
Test System:EVERFINE GO-2000B\_V1 SYSTEM V1.0.260  
Humidity:65.0%  
Test Distance:6.960m [K=1.0000]  
Remarks:

**CU AND LUMINAIRE BUDGETARY ESTIMATE DIAGRAM**

NAME: Sagitta-12W-3000k	TYPE:	WEIGHT:
DIM.:	SPEC.:	SERIAL No.:
MFR.: DOBAC	SUR.:	PROTECTION ANGLE:

pcc	80%			70%			50%			30%			10%			0
	50%	30%	10%	50%	30%	10%	50%	30%	10%	50%	30%	10%	50%	30%	10%	0
pw																0
pfc	20%			20%			20%			20%			20%			0
RCR	RCR:Room Cavity Ratio      Coefficients of Utilization(CU)															
0.0	1.19	1.19	1.19	1.16	1.16	1.16	1.11	1.11	1.11	1.06	1.06	1.06	1.02	1.02	1.02	.00
1.0	1.10	1.07	1.05	1.08	1.05	1.03	1.04	1.02	.00	.00	.98	.97	.96	.95	.94	.92
2.0	1.01	.97	.93	.00	.95	.92	.96	.93	.90	.93	.90	.88	.90	.88	.86	.85
3.0	.94	.88	.84	.92	.87	.83	.89	.85	.82	.87	.83	.80	.85	.82	.79	.78
4.0	.87	.81	.76	.86	.80	.76	.83	.79	.75	.81	.77	.74	.79	.76	.73	.71
5.0	.81	.74	.70	.80	.74	.69	.78	.73	.69	.76	.72	.68	.75	.71	.68	.66
6.0	.75	.69	.64	.75	.69	.64	.73	.68	.64	.72	.67	.63	.70	.66	.63	.61
7.0	.71	.64	.60	.70	.64	.60	.69	.63	.59	.67	.63	.59	.66	.62	.59	.57
8.0	.66	.60	.56	.66	.60	.56	.65	.59	.55	.64	.59	.55	.63	.58	.55	.53
9.0	.63	.56	.52	.62	.56	.52	.61	.56	.52	.60	.55	.52	.59	.55	.51	.50
10.0	.59	.53	.49	.59	.53	.49	.58	.53	.49	.57	.52	.49	.56	.52	.49	.47



C Range: 0 - 360DEG  
C Interval: 5.0DEG  
Test Speed: HIGH  
Temperature: 25.3DEG  
Operators: DOBAC  
Test Date: 2017-11-07

γ Range: 0 - 90DEG  
γ Interval: 0.5DEG  
Test System: EVERFINE GO-2000B\_V1 SYSTEM V1.0.260  
Humidity: 65.0%  
Test Distance: 6.960m [K=1.0000]  
Remarks:

WEC AND CCEC

NAME: Sagitta-12W-3000k	TYPE:	WEIGHT:
DIM.:	SPEC.:	SERIAL No.:
MFR.: DOBAC	SUR.:	PROTECTION ANGLE:

ρ <sub>cc</sub>	80%			70%			50%			30%			10%			0
ρ <sub>w</sub>	50%	30%	10%	50%	30%	10%	50%	30%	10%	50%	30%	10%	50%	30%	10%	0
ρ <sub>fc</sub>	20%			20%			20%			20%			20%			0
RCR	RCR:Room Cavity Ratio						Wall Exitance Coefficients(WEC)									
0.0																
1.0	.195	.111	.035	.188	.107	.034	.175	.101	.032	.164	.094	.030	.153	.089	.029	
2.0	.188	.103	.032	.182	.100	.031	.171	.095	.030	.162	.091	.028	.152	.086	.027	
3.0	.179	.095	.029	.174	.093	.028	.165	.089	.027	.156	.086	.026	.148	.082	.025	
4.0	.170	.088	.026	.165	.087	.026	.157	.083	.025	.150	.080	.024	.143	.078	.024	
5.0	.161	.082	.024	.157	.081	.023	.150	.078	.023	.144	.076	.023	.137	.073	.022	
6.0	.153	.076	.022	.149	.075	.022	.143	.073	.021	.137	.071	.021	.132	.069	.021	
7.0	.145	.072	.020	.142	.071	.020	.137	.069	.020	.131	.067	.020	.127	.066	.019	
8.0	.138	.067	.019	.135	.067	.019	.130	.065	.019	.126	.064	.018	.121	.062	.018	
9.0	.131	.064	.018	.129	.063	.018	.125	.062	.017	.121	.060	.017	.117	.059	.017	
10.0	.125	.060	.017	.123	.060	.017	.119	.059	.016	.116	.057	.016	.112	.056	.016	

ρ <sub>cc</sub>	80%			70%			50%			30%			10%			0
ρ <sub>w</sub>	50%	30%	10%	50%	30%	10%	50%	30%	10%	50%	30%	10%	50%	30%	10%	0
ρ <sub>fc</sub>	20%			20%			20%			20%			20%			0
RCR	RCR:Room Cavity Ratio						Ceiling Cavity Exitance Coefficients(CCEC)									
0.0	.190	.190	.190	.163	.163	.163	.111	.111	.111	.064	.064	.064	.020	.020	.020	
1.0	.172	.157	.143	.147	.135	.123	.101	.093	.085	.058	.054	.050	.019	.017	.016	
2.0	.158	.132	.111	.136	.114	.096	.093	.079	.067	.054	.046	.039	.017	.015	.013	
3.0	.147	.114	.087	.126	.098	.076	.086	.068	.053	.050	.040	.031	.016	.013	.010	
4.0	.137	.099	.070	.118	.086	.061	.081	.060	.043	.047	.035	.025	.015	.011	.008	
5.0	.129	.088	.058	.111	.076	.050	.076	.053	.035	.044	.031	.021	.014	.010	.007	
6.0	.122	.079	.048	.104	.068	.042	.072	.048	.030	.042	.028	.018	.013	.009	.006	
7.0	.115	.071	.041	.099	.062	.035	.068	.043	.025	.040	.026	.015	.013	.008	.005	
8.0	.109	.065	.035	.094	.056	.030	.065	.040	.022	.038	.023	.013	.012	.008	.004	
9.0	.104	.060	.030	.090	.052	.026	.062	.037	.019	.036	.022	.011	.012	.007	.004	
10.0	.099	.056	.027	.086	.048	.023	.059	.034	.016	.035	.020	.010	.011	.007	.003	

C Range: 0 - 360DEG  
 C Interval: 5.0DEG  
 Test Speed: HIGH  
 Temperature:25.3DEG  
 Operators:DOBAC  
 Test Date:2017-11-07

γ Range: 0 - 90DEG  
 γ Interval: 0.5DEG  
 Test System:EVERFINE GO-2000B\_V1 SYSTEM V1.0.260  
 Humidity:65.0%  
 Test Distance:6.960m [K=1.0000]  
 Remarks:

Uncorrected UGR Table

NAME: Sagitta-12W-3000k		TYPE:					WEIGHT:				
DIM.:		SPEC.:					SERIAL No.:				
MFR.: DOBAC		SUR.:					PROTECTION ANGLE:				
ceiling/cavity	0.7	0.7	0.5	0.5	0.3	0.7	0.7	0.5	0.5	0.3	
walls	0.5	0.3	0.5	0.3	0.3	0.5	0.3	0.5	0.3	0.3	
working plane	0.2	0.2	0.2	0.2	0.2	0.2	0.2	0.2	0.2	0.2	
Room dimensions	Viewed crosswise					Viewed endwise					
x = 2H y = 2H	19.3	20.3	19.5	20.5	20.7	22.6	23.7	22.9	23.8	24.0	
3H	19.3	20.2	19.5	20.4	20.6	22.9	23.8	23.2	24.1	24.3	
4H	19.2	20.1	19.5	20.3	20.5	22.9	23.8	23.2	24.0	24.3	
6H	19.1	19.9	19.4	20.2	20.4	22.9	23.7	23.2	23.9	24.2	
8H	19.0	19.9	19.4	20.1	20.4	22.8	23.6	23.1	23.9	24.1	
12H	19.0	19.8	19.3	20.1	20.3	22.8	23.5	23.1	23.8	24.1	
4H 2H	19.6	20.5	19.9	20.7	21.0	22.6	23.5	22.9	23.7	23.9	
3H	19.6	20.4	19.9	20.7	20.9	22.9	23.7	23.3	24.0	24.3	
4H	19.5	20.2	19.9	20.5	20.9	23.0	23.7	23.4	24.0	24.3	
6H	19.4	20.1	19.8	20.4	20.7	22.9	23.6	23.3	23.9	24.3	
8H	19.4	20.0	19.8	20.3	20.7	22.9	23.5	23.3	23.8	24.2	
12H	19.3	19.9	19.8	20.2	20.6	22.8	23.4	23.3	23.7	24.1	
8H 4H	19.5	20.1	19.9	20.4	20.8	22.9	23.5	23.3	23.8	24.2	
6H	19.4	19.9	19.9	20.3	20.7	22.8	23.3	23.3	23.7	24.1	
8H	19.4	19.8	19.8	20.2	20.7	22.8	23.2	23.2	23.6	24.1	
12H	19.3	19.7	19.8	20.1	20.6	22.7	23.1	23.2	23.5	24.0	
12H 4H	19.5	20.0	19.9	20.4	20.8	22.8	23.4	23.3	23.7	24.1	
6H	19.4	19.8	19.8	20.2	20.7	22.8	23.2	23.2	23.6	24.1	
8H	19.3	19.7	19.8	20.1	20.6	22.7	23.1	23.2	23.5	24.0	
Variations with the observer position at spacings:											
S = 1.0H	+ 1.2 / - 1.8					+ 1.5 / - 2.3					
1.5H	+ 1.0 / - 1.3					+ 2.8 / - 1.7					
2.0H	+ 1.3 / - 2.7					+ 1.9 / - 2.6					

CIE Pub.117 Corrected 624.6 lm Total Lamp Luminous Flux. (8log(F/F0) = -1.6)

C Range: 0 - 360DEG  
C Interval: 5.0DEG  
Test Speed: HIGH  
Temperature: 25.3DEG  
Operators: DOBAC  
Test Date: 2017-11-07

γ Range: 0 - 90DEG  
γ Interval: 0.5DEG  
Test System: EVERFINE GO-2000B\_V1 SYSTEM V1.0.260  
Humidity: 65.0%  
Test Distance: 6.960m [K=1.0000]  
Remarks:

UTILIZATION FACTORS TABLE

NAME: Sagitta-12W-3000k	TYPE:	WEIGHT:
DIM.:	SPEC.:	SERIAL No.:
MFR.: DOBAC	SUR.:	PROTECTION ANGLE:

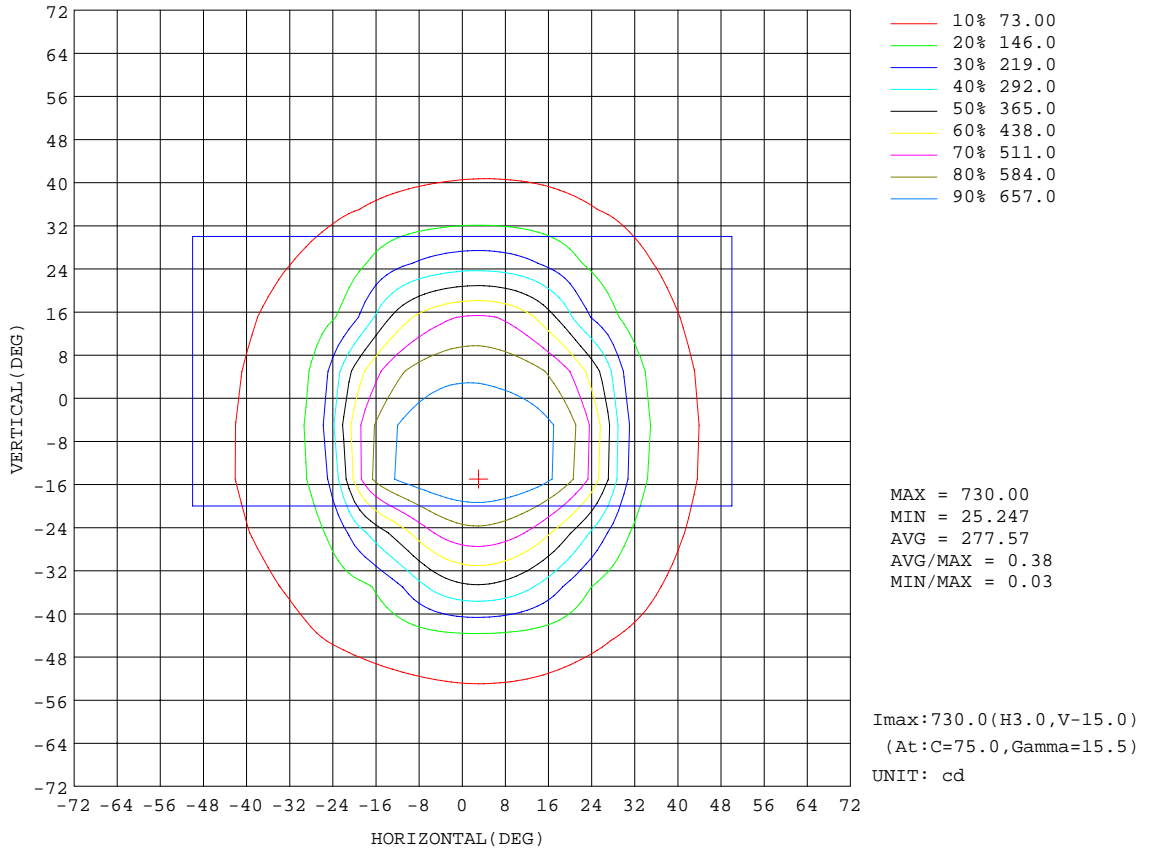
REFLECTANCE										
Ceiling	0.8	0.8	0.8	0.7	0.7	0.7	0.5	0.5	0.5	0
Walls	0.7	0.5	0.3	0.7	0.5	0.3	0.7	0.5	0.3	0
Working plane	0.2	0.2	0.2	0.2	0.2	0.2	0.2	0.2	0.2	0
ROOM INDEX	UTILIZATION FACTORS(PERCENT) k(RI) x RCR = 5									
k = 0.60	80	72	67	79	72	67	78	71	67	63
0.80	88	81	76	87	81	76	86	80	76	71
1.00	94	87	83	93	87	82	91	87	82	77
1.25	99	93	88	98	92	88	96	91	87	82
1.50	102	96	92	101	96	92	99	94	91	86
2.00	106	101	97	104	100	96	102	98	95	89
2.50	108	104	100	106	102	99	103	100	97	91
3.00	110	106	103	108	105	102	105	102	99	93
4.00	112	109	106	110	107	105	107	104	102	95
5.00	114	111	109	112	109	107	108	106	104	96
ROOM INDEX	UF(total)									Direct
According to DIN EN 13032-2 2004			Suspended				SHR NOM = 1.25			

C Range: 0 - 360DEG  
C Interval: 5.0DEG  
Test Speed: HIGH  
Temperature: 25.3DEG  
Operators: DOBAC  
Test Date: 2017-11-07

γ Range: 0 - 90DEG  
γ Interval: 0.5DEG  
Test System: EVERFINE GO-2000B\_V1 SYSTEM V1.0.260  
Humidity: 65.0%  
Test Distance: 6.960m [K=1.0000]  
Remarks:

ISOCANDELA DIAGRAM

NAME: Sagitta-12W-3000k	TYPE:	WEIGHT:
DIM.:	SPEC.:	SERIAL No.:
MFR.: DOBAC	SUR.:	PROTECTION ANGLE:

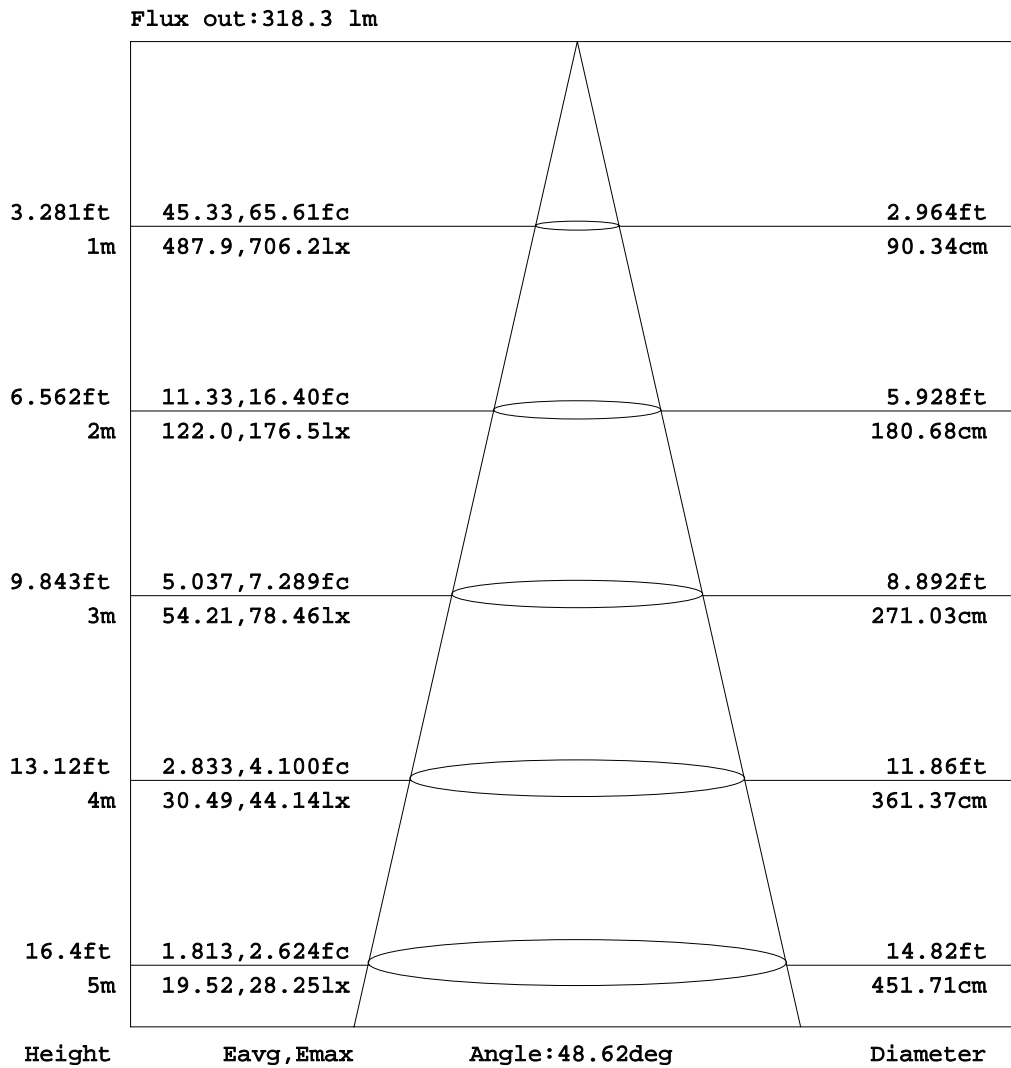


C Range: 0 - 360DEG  
 C Interval: 5.0DEG  
 Test Speed: HIGH  
 Temperature: 25.3DEG  
 Operators: DOBAC  
 Test Date: 2017-11-07

γ Range: 0 - 90DEG  
 γ Interval: 0.5DEG  
 Test System: EVERFINE GO-2000B\_V1 SYSTEM V1.0.260  
 Humidity: 65.0%  
 Test Distance: 6.960m [K=1.0000]  
 Remarks:

AAI Figure

NAME: Sagitta-12W-3000k	TYPE:	WEIGHT:
DIM.:	SPEC.:	SERIAL No.:
MFR.: DOBAC	SUR.:	PROTECTION ANGLE:



Note:The Curves indicate the illuminated area and the average illumination when the luminaire is at different distance.

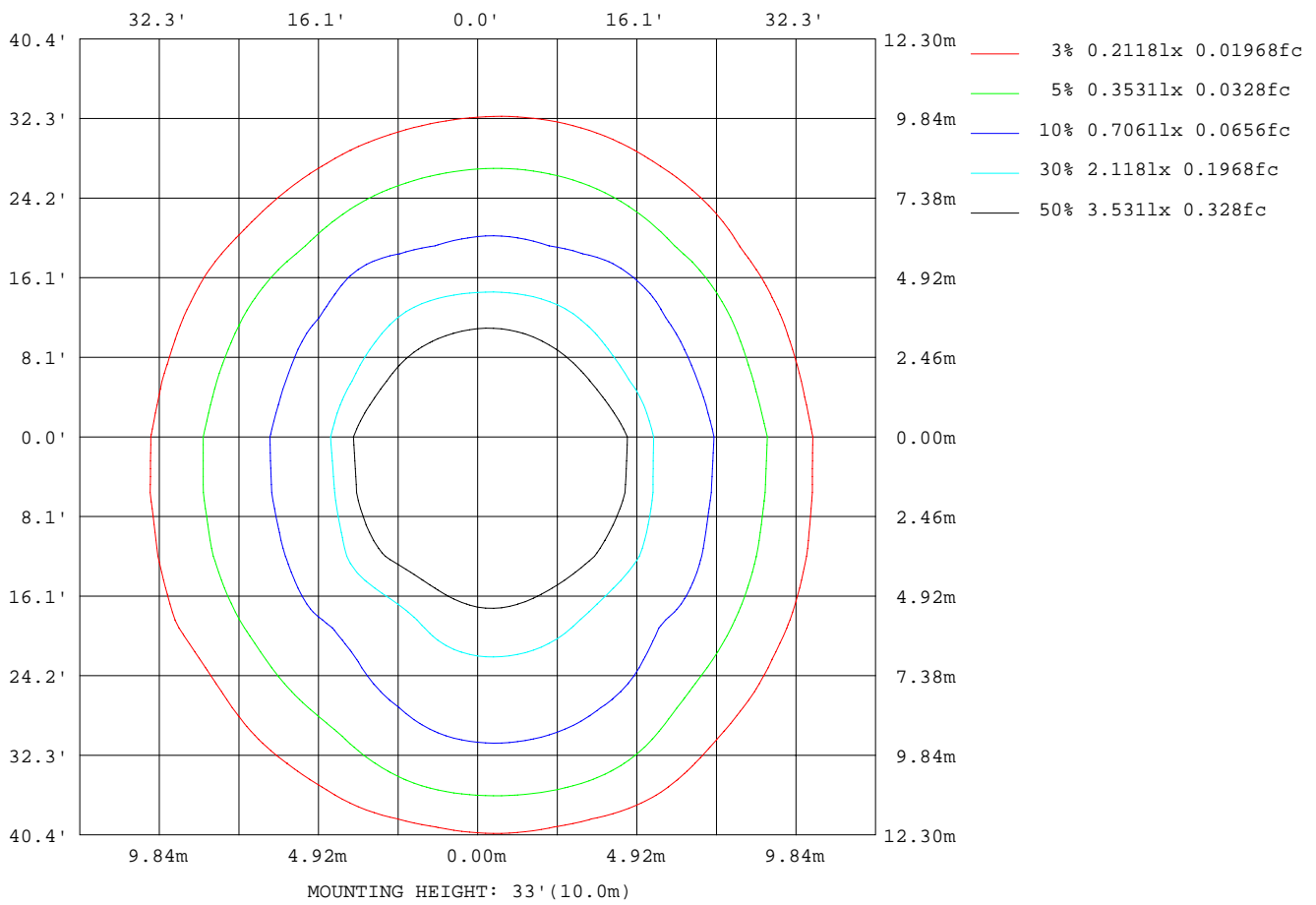
C Range: 0 - 360DEG  
C Interval: 5.0DEG  
Test Speed: HIGH  
Temperature:25.3DEG  
Operators:DOBAC  
Test Date:2017-11-07

γ Range: 0 - 90DEG  
γ Interval: 0.5DEG  
Test System:EVERFINE GO-2000B\_V1 SYSTEM V1.0.260  
Humidity:65.0%  
Test Distance:6.960m [K=1.0000]  
Remarks:



ISOLUX DIAGRAM

NAME: Sagitta-12W-3000k	TYPE:	WEIGHT:
DIM.:	SPEC.:	SERIAL No.:
MFR.: DOBAC	SUR.:	PROTECTION ANGLE:



C Range: 0 - 360DEG  
 C Interval: 5.0DEG  
 Test Speed: HIGH  
 Temperature: 25.3DEG  
 Operators: DOBAC  
 Test Date: 2017-11-07

$\gamma$  Range: 0 - 90DEG  
 $\gamma$  Interval: 0.5DEG  
 Test System: EVERFINE GO-2000B\_V1 SYSTEM V1.0.260  
 Humidity: 65.0%  
 Test Distance: 6.960m [K=1.0000]  
 Remarks:

**Average Luminance Table(CIBSE)**

NAME: Sagitta-12W-3000k	TYPE:	WEIGHT:
DIM.:	SPEC.:	SERIAL No.:
MFR.: DOBAC	SUR.:	PROTECTION ANGLE:

Parameter description for average Luminance	Symbol	Value	Unit
Luminance in Azimuth Plane	Bc	refer Table 2	cd/sq.m.
Intensity at angle Gamma in given azimuth plane	I	from data	cd/klm
Number of lamps	N	1	
Output of each lamp(initial lumens as specified)	F	624.625	lm
Multiplying factor	K	1	
Luminous area in horizontal plane used in calculations	A	0.006	sq.m.
Angle to the downward vertical from light centre	Gamma	from data	deg

Table 1. Calculation parameters for determination of CIBSE LG3:1996 Average Luminance

G deg	C plane(deg)																		
	0	10	20	30	40	50	60	70	80	90	100	110	120	130	140	150	160	170	180
55	11298	11969	12684	13456	15113	16193	17368	18257	18504	18054	17123	16370	15852	14244	11780	11069	9510	8984	8609
60	7502	7915	9115	10150	12024	12809	13142	13385	12983	12285	11792	11660	11751	10664	8556	7552	6622	6045	5775
65	4273	4576	5237	6337	8445	9018	9345	10581	11075	10760	9990	9066	8031	7200	6390	5308	4686	4158	3935
70	2104	2223	2746	3877	4617	6682	7710	8621	8940	8631	8035	7347	6476	5465	4492	3632	2832	2320	2102
75	674	704	1298	1815	3130	4482	5310	5668	5549	5242	4983	4742	4262	3913	3496	2176	1939	1474	1398
80	416	463	670	1093	1067	1513	1520	876	237	0	213	719	1183	1580	2071	2075	1814	1632	1544
85	439	440	630	0	0	0	0	0	0	0	0	0	0	0	0	0	2415	1878	1688

Table 2. Average Luminance(cd/sq.m.) for defined C plane,Gamma angle

CIBSE Category	Gamma (deg)	Average Luminance		Patch Luminance	
		maximum	specified	maximum	specified
		calculated	maximum	measured	maximum
Category 1	55 to 90	18504	200	---	500
Category 2	65 to 90	11075	200	---	500
Category 3	75 to 90	5668	200	---	500

Table 3. Tabulation of Average and Patch Luminance(cd/sq.m.) for defined CIBSE categories

No match

C Range: 0 - 360DEG  
C Interval: 5.0DEG  
Test Speed: HIGH  
Temperature:25.3DEG  
Operators:DOBAC  
Test Date:2017-11-07

γ Range: 0 - 90DEG  
γ Interval: 0.5DEG  
Test System:EVERFINE GO-2000B\_V1 SYSTEM V1.0.260  
Humidity:65.0%  
Test Distance:6.960m [K=1.0000]  
Remarks:

**Average Luminance Table(CIBSE)**

NAME: Sagitta-12W-3000k	TYPE:	WEIGHT:
DIM.:	SPEC.:	SERIAL No.:
MFR.: DOBAC	SUR.:	PROTECTION ANGLE:

Parameter description for average Luminance	Symbol	Value	Unit
Luminance in Azimuth Plane	Bc	refer Table 2	cd/sq.m.
Intensity at angle Gamma in given azimuth plane	I	from data	cd/klm
Number of lamps	N	1	
Output of each lamp(initial lumens as specified)	F	624.625	lm
Multiplying factor	K	1	
Luminous area in horizontal plane used in calculations	A	0.006	sq.m.
Angle to the downward vertical from light centre	Gamma	from data	deg

Table 1. Calculation parameters for determination of CIBSE LG3:2001 Average Luminance

G deg	C plane(deg)																		
	0	10	20	30	40	50	60	70	80	90	100	110	120	130	140	150	160	170	180
55	11298	11969	12684	13456	15113	16193	17368	18257	18504	18054	17123	16370	15852	14244	11780	11069	9510	8984	8609
60	7502	7915	9115	10150	12024	12809	13142	13385	12983	12285	11792	11660	11751	11066	8556	7552	6622	6045	5775
65	4273	4576	5237	6337	8445	9018	9345	10581	11075	10760	9990	9066	8031	7200	6390	5308	4686	4158	3935
70	2104	2223	2746	3877	4617	6682	7710	8621	8940	8631	8035	7347	6476	5465	4492	3632	2832	2320	2102
75	674	704	1298	1815	3130	4482	5310	5668	5549	5242	4983	4742	4262	3913	3496	2176	1939	1474	1398
80	416	463	670	1093	1067	1513	1520	876	237	0	213	719	1183	1580	2071	2075	1814	1632	1544
85	439	440	630	0	0	0	0	0	0	0	0	0	0	0	0	0	2415	1878	1688

Table 2. Average Luminance(cd/sq.m.) for defined C plane,Gamma angle

range (deg)	Maximum measured	Average Luminance(cd/sq.m)			
		Maximum limit for screen type & software category used			
		Type I,II screen Some neg.s'ware	Type I,II screen Only pos.s'ware	Type III screen Some neg.s'ware	Type III screen Only pos.s'ware
55 to 90	18504	1000	1500	200	500
65 to 90	11075	1000	1500	200	500

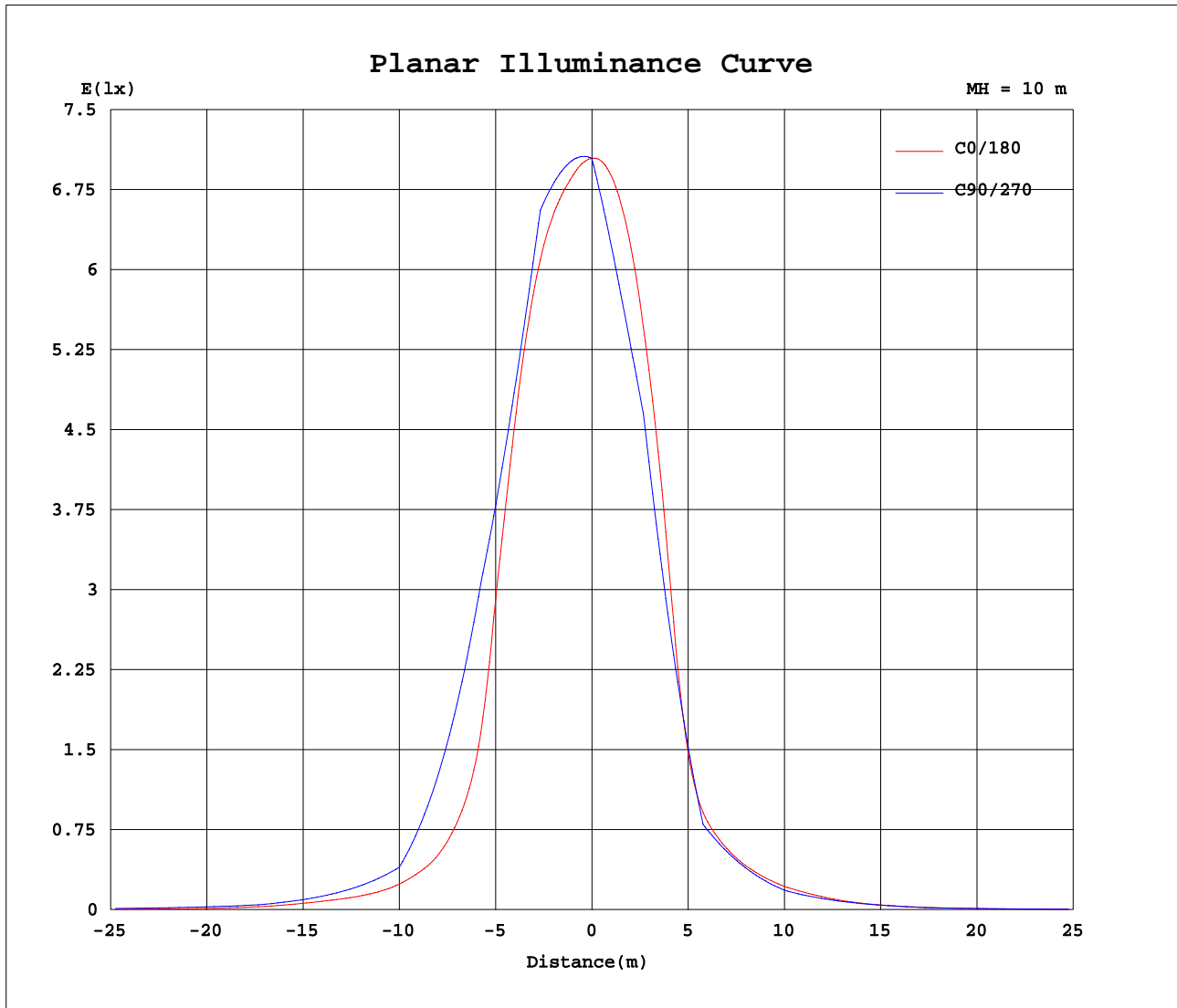
Table 3. Tabulation of average luminance(cd/sq.m.) and luminance limits

No match

C Range: 0 - 360DEG  
C Interval: 5.0DEG  
Test Speed: HIGH  
Temperature:25.3DEG  
Operators:DOBAC  
Test Date:2017-11-07

γ Range: 0 - 90DEG  
γ Interval: 0.5DEG  
Test System:EVERFINE GO-2000B\_V1 SYSTEM V1.0.260  
Humidity:65.0%  
Test Distance:6.960m [K=1.0000]  
Remarks:

Planar Illuminance Curve



C Range: 0 - 360DEG  
 C Interval: 5.0DEG  
 Test Speed: HIGH  
 Temperature: 25.3DEG  
 Operators: DOBAC  
 Test Date: 2017-11-07

$\gamma$  Range: 0 - 90DEG  
 $\gamma$  Interval: 0.5DEG  
 Test System: EVERFINE GO-2000B\_V1 SYSTEM V1.0.260  
 Humidity: 65.0%  
 Test Distance: 6.960m [K=1.0000]  
 Remarks:



LUMINOUS DISTRIBUTION INTENSITY DATA

NAME: Sagitta-12W-3000k	TYPE:	WEIGHT:
DIM.:	SPEC.:	SERIAL No.:
MFR.: DOBAC	SUR.:	PROTECTION ANGLE:

Table--2

UNIT: cd

C( DEG) γ (DEG)	95	100	105	110	115	120	125	130	135	140	145	150	155	160	165	170	175	180	185
0	704	704	704	704	704	704	704	704	704	704	704	704	704	704	704	704	704	704	704
5	712	712	711	711	710	710	709	708	707	706	705	704	703	703	702	701	701	700	694
10	719	718	716	713	711	708	704	701	697	694	690	687	683	680	678	676	675	674	660
15	725	722	717	712	705	699	691	683	675	666	656	646	637	628	619	612	608	605	582
20	637	631	625	620	618	621	628	639	638	616	591	563	537	512	493	480	474	474	444
25	545	530	511	493	478	472	473	477	475	464	436	375	328	296	273	261	256	258	242
30	451	422	384	346	320	307	303	299	281	249	218	195	174	159	150	144	141	140	135
35	336	311	276	235	199	168	154	162	156	144	133	126	123	118	112	108	105	105	100
40	223	208	186	163	142	126	119	113	108	104	101	97.2	94.2	92.0	88.0	84.1	81.7	80.8	77.6
45	112	113	112	109	102	97.8	93.9	89.5	85.0	81.7	80.3	76.9	73.6	71.1	69.1	65.0	62.7	61.7	59.4
50	85.2	82.8	80.5	78.4	76.6	74.9	73.1	68.8	63.9	60.6	59.3	58.7	54.8	51.7	50.9	48.9	46.7	46.6	44.2
55	60.6	58.9	57.5	56.3	55.3	54.6	53.0	49.0	43.6	40.5	39.5	38.1	35.0	32.7	31.7	30.9	29.4	29.6	28.5
60	36.0	35.4	35.0	35.0	35.0	35.3	34.4	32.0	28.7	25.7	23.3	22.7	21.2	19.9	18.8	18.1	17.3	17.3	16.9
65	26.4	25.3	24.2	23.0	21.6	20.4	18.7	18.3	17.4	16.2	15.0	13.5	12.7	11.9	11.2	10.5	10.2	9.98	9.53
70	17.1	16.5	15.8	15.1	14.1	13.3	12.3	11.2	10.1	9.22	8.74	7.45	7.24	5.81	5.34	4.76	4.50	4.31	4.23
75	7.83	7.74	7.62	7.36	6.89	6.62	6.55	6.08	5.72	5.43	4.57	3.38	3.08	3.01	2.44	2.29	2.21	2.17	2.07
80	0.06	0.22	0.47	0.75	0.99	1.23	1.58	1.65	1.87	2.16	2.30	2.16	1.99	1.89	1.82	1.70	1.64	1.61	1.53
85	0.00	0.00	0.00	0.00	0.00	0.00	0.00	0.00	0.00	0.00	0.00	0.00	0.56	1.26	1.16	0.98	0.50	0.88	0.87
90	0.00	0.00	0.00	0.00	0.00	0.00	0.00	0.00	0.00	0.00	0.00	0.00	0.00	0.00	0.00	0.00	0.00	0.00	0.00

C Range: 0 - 360DEG  
C Interval: 5.0DEG  
Test Speed: HIGH  
Temperature:25.3DEG  
Operators:DOBAC  
Test Date:2017-11-07

γ Range: 0 - 90DEG  
γ Interval: 0.5DEG  
Test System:EVERFINE GO-2000B\_V1 SYSTEM V1.0.260  
Humidity:65.0%  
Test Distance:6.960m [K=1.0000]  
Remarks:

LUMINOUS DISTRIBUTION INTENSITY DATA

NAME: Sagitta-12W-3000k	TYPE:	WEIGHT:
DIM.:	SPEC.:	SERIAL No.:
MFR.: DOBAC	SUR.:	PROTECTION ANGLE:

Table--3

UNIT: cd

C( DEG) γ (DEG)	190	195	200	205	210	215	220	225	230	235	240	245	250	255	260	265	270	275	280
0	704	704	704	704	704	704	704	704	704	704	704	704	704	704	704	704	704	704	704
5	688	682	677	672	667	662	658	655	652	649	647	645	643	642	641	641	641	642	643
10	646	634	623	613	604	597	590	585	581	578	576	575	575	575	576	577	578	580	582
15	560	542	527	514	505	497	493	490	488	489	491	494	497	501	506	511	515	519	522
20	419	398	381	368	359	356	357	361	368	373	376	377	377	378	379	381	385	389	395
25	232	224	218	211	204	198	212	228	242	252	256	257	255	253	251	252	254	258	265
30	131	129	129	127	124	125	130	138	147	153	154	149	141	133	127	123	123	127	134
35	97.5	95.8	95.0	94.3	93.8	93.3	92.6	92.3	92.5	89.1	89.8	91.4	92.9	94.5	96.0	97.7	99.4	101	102
40	75.6	74.6	74.0	72.9	72.1	71.2	69.9	68.5	68.9	69.7	70.6	71.5	72.0	72.6	73.2	74.2	75.5	76.9	78.2
45	58.2	58.0	57.0	56.4	56.2	55.6	54.4	53.7	53.6	53.6	53.6	53.3	52.5	51.6	51.0	51.0	51.6	52.8	54.5
50	43.3	42.8	41.7	41.1	41.6	41.3	40.5	40.1	39.9	39.5	39.0	38.8	38.6	38.4	38.5	39.1	39.9	40.8	41.7
55	28.6	28.2	28.0	27.8	27.8	27.7	27.2	26.7	28.0	28.3	28.0	27.6	27.3	27.0	27.0	27.4	28.1	29.0	29.9
60	17.3	17.2	17.6	17.6	17.4	16.6	17.0	17.7	18.1	18.1	17.3	16.6	16.1	15.7	15.6	15.8	16.4	17.2	18.2
65	9.24	9.15	9.33	9.61	9.62	9.92	10.0	9.87	9.52	8.98	9.13	9.37	9.70	10.0	10.3	10.7	11.1	11.7	12.1
70	4.13	4.17	3.91	4.39	4.73	4.29	4.12	4.83	5.38	5.58	5.57	5.51	5.53	5.55	5.60	5.72	5.92	6.23	6.55
75	2.02	1.95	1.95	2.02	1.83	1.93	2.23	2.58	2.58	2.40	2.12	1.80	1.47	1.16	0.93	0.76	0.70	0.76	0.95
80	1.44	1.33	1.26	1.21	1.14	1.06	0.91	0.68	0.49	0.35	0.25	0.16	0.10	0.05	0.02	0.01	0.00	0.01	0.02
85	0.85	0.68	0.62	0.27	0.00	0.00	0.00	0.00	0.00	0.00	0.00	0.00	0.00	0.00	0.00	0.00	0.00	0.00	0.00
90	0.00	0.00	0.00	0.00	0.00	0.00	0.00	0.00	0.00	0.00	0.00	0.00	0.00	0.00	0.00	0.00	0.00	0.00	0.00

C Range: 0 - 360DEG  
C Interval: 5.0DEG  
Test Speed: HIGH  
Temperature:25.3DEG  
Operators:DOBAC  
Test Date:2017-11-07

γ Range: 0 - 90DEG  
γ Interval: 0.5DEG  
Test System:EVERFINE GO-2000B\_V1 SYSTEM V1.0.260  
Humidity:65.0%  
Test Distance:6.960m [K=1.0000]  
Remarks:

LUMINOUS DISTRIBUTION INTENSITY DATA

NAME: Sagitta-12W-3000k	TYPE:	WEIGHT:
DIM.:	SPEC.:	SERIAL No.:
MFR.: DOBAC	SUR.:	PROTECTION ANGLE:

Table--4

UNIT: cd

C( DEG) γ (DEG)	285	290	295	300	305	310	315	320	325	330	335	340	345	350	355				
0	704	704	704	704	704	704	704	704	704	704	704	704	704	704	704				
5	644	646	647	650	652	655	658	662	666	670	674	679	684	689	694				
10	585	587	590	594	597	602	607	613	620	628	637	647	658	669	681				
15	525	527	528	530	532	534	539	545	553	564	577	593	611	631	653				
20	402	409	417	424	431	437	439	440	446	457	473	493	517	545	577				
25	272	281	290	298	305	308	308	306	297	305	322	344	369	397	429				
30	145	157	171	184	193	199	196	190	186	184	192	204	213	223	236				
35	103	104	104	104	106	117	122	124	123	121	120	124	129	134	140				
40	79.4	80.6	81.5	81.9	81.8	81.5	81.0	83.6	84.9	85.8	86.6	87.0	87.6	88.8	91.7				
45	56.4	58.2	59.8	61.1	61.9	62.1	62.1	61.3	60.2	61.1	61.5	62.0	62.5	63.2	64.8				
50	42.5	42.9	43.2	43.4	44.1	45.2	45.7	45.2	44.9	44.5	45.1	45.5	46.1	46.8	48.0				
55	30.8	31.4	31.7	32.0	32.0	32.2	32.2	32.8	33.4	33.7	35.2	35.6	35.5	36.9	37.2				
60	19.2	20.0	20.5	20.9	21.4	21.8	22.4	23.3	23.9	22.9	23.2	22.2	21.4	21.0	21.0				
65	12.5	12.6	12.4	12.0	11.6	12.3	13.4	14.0	13.5	11.9	11.1	10.3	9.51	9.52	9.38				
70	6.87	7.08	7.14	7.09	7.05	7.10	6.77	5.23	5.83	5.59	3.71	3.67	3.76	3.41	4.10				
75	1.25	1.62	2.03	2.43	2.80	3.15	3.09	2.56	2.55	1.60	1.07	1.46	0.94	0.88	0.91				
80	0.05	0.09	0.14	0.20	0.27	0.33	0.37	0.52	0.74	0.52	0.36	0.34	0.36	0.35	0.38				
85	0.00	0.00	0.00	0.00	0.00	0.00	0.00	0.00	0.00	0.00	0.05	0.10	0.13	0.17	0.23				
90	0.00	0.00	0.00	0.00	0.00	0.00	0.00	0.00	0.00	0.00	0.00	0.00	0.00	0.00	0.00				

C Range: 0 - 360DEG  
C Interval: 5.0DEG  
Test Speed: HIGH  
Temperature:25.3DEG  
Operators:DOBAC  
Test Date:2017-11-07

γ Range: 0 - 90DEG  
γ Interval: 0.5DEG  
Test System:EVERFINE GO-2000B\_V1 SYSTEM V1.0.260  
Humidity:65.0%  
Test Distance:6.960m [K=1.0000]  
Remarks: